

RESERVE CHAMPION STEER: A proud Karen Trinkle holds her 925-lb. reserve champion steer which was pur-



GRAND CHAMPION STEER: John Rentz (right) shows his grand champion steer to purchaser Fritz Schumm of Schumm's Restaurant.



GRAND CHAMPION LAMB: Danny Grau (right) and Gene Shoemaker of Jiffy Market, pose with Danny's 101-lb.

grand champion lamb which Shoemaker purchased for \$1.95 per pound.

WEATHER

	Min.	Max.	Precip.
Wednesday, Aug. 25	67	85	0.00
Thursday, Aug. 26	62	83	0.49
Friday, Aug. 27	61	79	0.25
Saturday, Aug. 28	65	84	0.00
Sunday, Aug. 29	65	87	0.00
Monday, Aug. 30	66	90	0.00
Tuesday, Aug. 31	60	70	0.00

By H. K. L.

The Chelsea Standard

ONE HUNDRED-SECOND YEAR—No. 11

12 Pages This Week

Plus 4-Page Tab Supplement

CHELSEA, MICHIGAN, THURSDAY, SEPTEMBER 2, 1971

15c per copy

SUBSCRIPTION: \$4.00 PER YEAR

Most Successful Fair Yet Breaks Attendance Records

The carnival has moved on, the livestock barns are empty and the fairgrounds deserted. The 1971, Chelsea Community Fair is over—but all involved agree that this year's fair was again a great success.

Unofficial reports place this year's attendance and revenue well above last year's. Although fair officials would not estimate the amount of money made by the fair this year, Fair President Allen Broesamle did estimate that approximately 17,000 people attended, an increase of 3,000 or 4,000 over last year.

Big events of the last three days of the fair were Saturday's street parade, Wednesday's fat-

stock sale, and the tractor pulls held Thursday and Friday.

In addition to the bands, antique cars and clowns, there were nine floats entered in the parade. The Chelsea Methodist Home won \$35 for their first-place entry in the adult division entitled, "In Everything, Give Thanks."

The sophomore class topped the youth division of the parade, winning \$35 for their float "A Child's Dream."

Other winners in the parade adult division were: Kiwanis Club, 2nd, \$30; and Stockbridge Squares, 3rd, \$25. Adult division winner of the special Chelsea Volunteer Fire Department \$10 award was the Headstart

float.

Youth division second- and third-place winners were: Junior class, 2nd, \$30; St. Paul Youth Fellowship, 3rd, \$25. The senior class was the recipient of the Chelsea Fire Department's special \$10 award in the youth division.

Judges for the Saturday parade were Joseph Schnebelt, of Dexter, Arlene Howe of North Lake, and Levi Ludtke of Gregory.

Fire Chief James Gaken said that prize winners in the Saturday parade may pick up their prizes at his home, 310 Pierce St. Thursday night fair-goers who had the stamina to stay until the end of the compact tractor

pull at 3:45 a.m. Friday saw Harold Dibble of Saline, Jeff Bergey of Saline, Janet Dibble of Ann Arbor, and Ron Dibble of Ann Arbor sweep the first-place awards in their classes of event.

First-place winners in the four classes of the Farm Tractor Pull were Lloyd Grau of Chelsea, John Mazel of Owosso, Bill Spike of Owosso and Doug Englebert of Manchester.

More than \$14,400 worth of livestock was sold during the Fat Stock sale held Wednesday night, with 27 steers bringing \$12,332.55, hogs \$1,099.50, and sheep \$998.28, according to Paul Mann, president of the Chelsea State Bank.

Top price for steers was \$1.15 per pound paid by Fritz Schumm for John Rentz's 875-pound Grand Champion. Karen Trinkle's 925-pound Reserve Champion steer was purchased by Wolverine Bar for 75 cents per pound.

In the hog auction, two barrows and six pens of hogs were sold with Gordon McCalla's 195-pound Grand Champion barrow bringing 80 cents per pound from Howell Livestock Auction. Karen Baldus 185-pound Reserve Champion barrow was purchased for 40 cents per pound by the Michigan Livestock Exchange.

Danny Grau's 101-pound Grand Champion lamb was purchased by Jiffy Market for \$1.95 per pound, and Matt Grau's 107-

pound Reserve Champion lamb brought 70 cents per pound from the Manchester Locker Plant. A total of nine lambs and five pens of sheep were sold during the auction.

This year's fair was marred, however, by the death of a horse belonging to George Elkins at the beginning of the Broom Polo contest held Thursday afternoon.

According to witnesses, the Elkins horse, ridden by Randy Romine, either was kicked by or collided with a horse ridden by Jim Sexton, just after the broom polo contest got under way at 1 p.m.

The 16-year-old registered Morgan apparently died instant-

ly. No autopsy was performed, and the exact cause of death was not determined.

Following the accident the horse was buried on the fairgrounds, and the broom polo contest cancelled.

The fair won't be over for at least three people until Sept. 21. On that day, the winners in the first balloon ascension contest, sponsored by the Chelsea Jaycee Auxiliary, will be invited to the auxiliary's meeting to receive their prize money.

Finders of the balloons have until Sept. 18 to return the cards attached to the balloons, according to Auxiliary president Sandy Brown.

And there will be warm mem-

ories of the food served at the fair kitchen in the new Fair Service Center building, completed the day before the fair opened.

The kitchen was a popular stopping place for fair-goers, with unofficial estimates of the total sales there running as high as \$8,000. The dining room was decorated this year with pictures from the Chelsea Art Center.

Saturday evening fair-goers were surprised to find that the Special Surprise Attraction for this year's fair did not materialize. But all ended well, and the fair closed as scheduled at 8 p.m. Saturday with a speech by 1971 Fair Queen Cathy Clark.

Tractor Pulls Attract Crowds

Fair-goers again filled the stands for the excitement and action of the tractor pulls held Thursday night, Friday, and Friday night at the Chelsea Community Fair.

Competition in the compact class was keen with the event lasting until 8:45 a.m. Friday. But rain hampered the efficiency of many of the heavy-weight tractors pulling Friday night.

Due to the wet weather, some of the tractors that pulled extremely well last year were either forced from the competition, or did not equal their pulls of last year.

Winners in the tractor pulls, by class, were:

COMPACT TRACTORS—
6-7 hp.—Harold Dibble, Saline, 1st, 193 percent, \$20; Marion Mel-

lon, Grass Lake, 2nd, \$15; Brian Leisinger, Grass Lake, 3rd, \$10; Alden Faunce, Petersburg, 4th, \$5.
8-9 hp.—Jeff Bergey, Dexter, 1st, 188 percent, \$20; David Magraw, Plymouth, 2nd, \$15; Art Sias, Dexter, 3rd, \$10; Mark Schulze, Chelsea 4th, \$5.

10-11 hp.—Janet Dibble, Ann Arbor, 1st, 263 percent, \$20; Willard Girbach, Saline, 2nd, \$15; Ken Gilbert, Milan, 3rd, \$10; Duane Trinkle, Dexter, 4th, \$5.

12 hp.—Ron Dibble, Ann Arbor, 1st, 250 percent, \$20; Richard Basha, Saline, 2nd, \$15; Dennis Wilkens, Plymouth, 3rd, \$10; Waker Hoffman, Grass Lake, 4th, \$5.

FARM TRACTORS—
Winners in the larger classes of (Continued on page six)

Schools Ready For Opening Wednesday

Buses for the Chelsea School District and the hot lunch program will operate in the same way they did last year according to business manager for the school district, Fred Mills.

Only children living outside the city limits are eligible to ride the district buses, Mills said. Approximately 1,350 out of the district's 2,450 students will be bused to school this fall.

The buses will follow the same routes they followed last year, Mills said, adding that any route changes that may take place will be made a week or so after school starts. If there are changes, all the parents of the students involved will be notified, Mills said.

Bus pick-ups will again begin at about 7:30 a.m., getting all students to their schools by approximately 8:10 a.m. (Continued on page six)



YOUNG AT HEART: Residents of the Chelsea Methodist Home entered their first float ever in the Community Fair Parade this year, and won top honors in the Adult Division with it. The float, entitled "In Everything Give Thanks," was topped by the Home's first King and Queen, Albe and Ida (Tina) Salmonson.

Special Award Winners Listed

Grand champion and other special award winners in the various judged categories of the Chelsea Community Fair were:

Beef: John Rentz, grand champion steer. Karen Trinkle, reserve champion steer. Danny Grau, grand champion female. Doug Sindlinger, best records trophy. Irwin Herrst, best rate of gain trophy. Duane Bycraft, showmanship trophy.

Swine: Gordon McCalla, showmanship trophy. Duane Fiegel, grand champion sow. Dan Baldus, reserve champion sow. Duane Fiegel, grand champion boar. Gordon McCalla, grand champion barrow. Karen Baldus, grand champion pen, and reserve champion barrow. Gordon McCalla, reserve champion pen.

Rabbits: Leslie Hurd, best of show. Howard Sias, second best of show.

Sheep: Tim Grau, market champion pen. Lisa Schairer, reserve champion pen. Daniel Grau, market champion fat lamb. Matt Gray, reserve champion lamb. Diane Bycraft, Corriedale champion ewe and ram, showmanship trophy. Tim Grau, Hampshire champion ewe, Mark Schairer,

Hampshire champion ram. Randy Hellman, Shropshire champion ewe.

Horses and Ponies: Pam Bristle,

grand champion horse. Jim Sexton, showmanship trophy and reserve champion horse. Vicki Meyer, grand champion pony. Rita Drouare, reserve champion pony.

Dairy Cattle: John Kozminski, grand champion Holstein. Debbie Murdock, showmanship trophy.

Home Economics: Miriam Klemmer, top exhibit, grand champion ribbon. Fran Koepke, most deserving canned item. Miriam Klemmer, most deserving baked item, adult division. Terri Gilbreath, most deserving baked item, junior division. Darlene Robbins, most deserving clothing item, adult division. Diane Robbins, most deserving clothing item, junior division. Marge Prinzing, most deserving household item, adult division. Helen Leonard, most deserving household item, junior division.

Hobbies: Nina Underhill, most unusual exhibit. Duane Luick, most detailed and time consuming exhibit.

Floriculture: Delia Schiller, grand champion flower. Mercedes DeLaTorre, grand champion cut flower. Martin Ruhlig, grand champion artistic arrangement. Waltrand Porter, grand champion plant.

(Continued on page six)

Champion Steer Sells at \$1.15 per lb. At Fair Auction

Record prices were paid for the grand champion and reserve champion steers at the Chelsea Community Fair Fat Stock sale this year, but last year's record price of \$2.20 per pound for Tim Grau's grand champion lamb still stands.

John Rentz's 875-pound grand champion steer was purchased by Fritz Schumm for Schumm's restaurant for a record \$1.15 per pound. Last year Schumm's paid 85 cents per pound for Cheryl Trinkle's 1,000-lb. grand champion.

Karen Trinkle had this year's reserve champion steer which sold to the Wolverine Bar for 75 cents per pound. Karen's steer weighed 925 pounds.

Owners of the other 25 steers auctioned, the weight of the steer, the buyers and the price per pound are:

Duane Bycraft, 970 lbs., Chelsea Grinding, 50c per lb.
David Lesser, 824 lbs., Chelsea State Bank, 50c per lb.
Debbie Gross, 960 lbs., Farmer's Supply, 50c per lb.
David Trinkle, 850 lbs., John Brooks, 48c per lb.
Duane Trinkle, 980 lbs., Ann Arbor Federal Savings, 48c per lb.
Karen Baldus, 865 lbs., Robert Meader, 48c per lb.

Larry Hopkins, 980 lbs., Dr. W Lane, 49c per lb.
Sue Heydlauff, 830 lbs., State Farm Ins., Wallace Wood, 48c per lb.
Don Baldus, 960 lbs., Chelsea Milling, 48c per lb.
Janis Hopkins, 780 lbs., James Robards, 50c per lb.
Denise Bycraft, 950 lbs., Service Meat Processing, 50c per lb.

Lewis Ritchie, 810 lbs., Honnerger's, 48c per lb.
Dale Lesser, 1,025 lbs., Chelsea Lumber Co., 48c per lb.
Neil Bollinger, 845 lbs., Dr. J Botsford, 46c per lb.
Douglass Lesser, 995 lbs., Heydlauff's, 48c lb.

Cheryl Trinkle, 780 lbs., Kausch & Flintoft, 48c per lb.
Kathy Trinkle, 960 lbs., Washetaw Crop Service, 74c per lb.
Debbie Clark, 800 lbs., McCalla Mobile Feed, 47c per lb.
Ken McCalla, 1,060 lbs., Heydlauff's, 45c per lb.

Doug Sindlinger, 865 lbs., Manchester Locker Plant, 46c per lb.
Bob Herrst, 940 lbs., Jiffy Market, 46c per lb.
Don Trinkle, 765 lbs., Service Meat Processing, 43c per lb.
Kathy McCalla, 930 lbs., Michigan (Continued on page three)



DREAMTIME: Storyland figures flanked the big bed setting of "A Child's Dream," sophomore class entry and top winner in the Youth Division of the Fair Parade. Sophomore class queen candidate, Jane Buxton, is propped against the headboard of the bed.

Guy Freysinger Awarded Silver Star for Vietnam Action

U. S. Army Spec-5 Guy W. Freysinger, 20, 1220 S. Fletcher Rd., has been awarded the Silver Star for gallantry in action in Vietnam.

Freysinger, the son of George Freysinger, 1220 S. Fletcher Rd., and Jean Freysinger of Manchester, is now recovering at Walter Reed Hospital from wounds received in combat. Freysinger is a 1969 graduate of Chelsea High school.

His citation reads: "Spec-5 Freysinger distinguished himself on March 23, 1971, while operating a road grader on a combat support mission on the Republic of Vietnam. He was driving his road grader in a small convoy to a work site on highway QL-9 during Operation Dewey Canyon II.

The front vehicle carrying artillery powder canisters was struck with an RPG (rocket propelled grenade), thus resulting in the road being blocked.

"Realizing that the convoy must be moved out of the kill zone, Freysinger used his road grader as a dozer to push the burning cargo truck off the road. With total disregard for his personal safety, he then pushed the flaming powder canisters off the road.

"With his tires burning and flames engulfing the cab of the grader, he cleared the road, thus allowing the other vehicles to pass through the bullet-swept area and on to safety. Freysinger's gallantry in action was in keeping with the highest traditions of the military service and reflects great credit upon himself, his unit, and the United States Army."



Washington Report by Congressman MARVIN L. ESCH

When the House comes back after its summer recess, a requirement of the Legislative Reorganization Act, it will have as an early item on the calendar, a piece of legislation that I have been working to develop for many months. This proposal would control the dumping of harmful wastes into America's coastal and offshore waters, and is nearly identical to the one I proposed back in February. It creates a national policy banning unregulated ocean dumping with enforcement responsibility in the hands of the Environmental Protection Agency.

No one really knows the volume of wastes that have been dumped into the oceans over past years. It only became a matter of concern after several shocking and dramatic incidents were revealed such as the dumping of nerve gas and oil wastes off the Florida coast as well as the dumping of sewage and other wastes off New York harbor. As a result, several bills were introduced in this Congress, and hearings promptly got underway.

These hearings revealed the critical need for a national policy on ocean dumping and the necessity to set tough penalties for offenders.

There are several provisions of the bill that are especially worthy of note. Title III establishes a national system of marine sanctuaries. This represents a major accomplishment, since instead of merely designating areas where dumping may be carried on safely, the bill places heavy emphasis on determining those areas of our marine environment that are most valuable and gets them aside as sanctuaries. Moreover the absolute prohibition on the dumping of radiological, chemical, or biological warfare agents or high-level radioactive waste, which was part of the bill I proposed early this year, is also in the Committee bill that we will be presenting to the entire membership of the House for a vote.

These two features, lumped together, along with the permit sys-

tem for authorized dumping, and a research program under the National Science Foundation, represents the realization of my objectives and gives us a strong piece of legislation worthy of expeditious approval.

Jacques-Yves Cousteau, the famed oceanographer, recently said: "The sea is the source of life. If the sea did not exist man would not exist. The sea is fragile and in danger. We must love and protect it if we hope to continue to exist ourselves."

Democrats Plan Picnic For Labor Day

The Oaks Farm, at 5039 Dexter-Pinckney Rd., will be the scene of the annual Washtenaw County Democrats Labor Day Picnic.

Beginning at 2 p.m. on Monday, Sept. 6, with band music, arriving ticket-holders will be greeted by an antique ball box and asked to participate in a candidate poll in regard to the upcoming primary races for president and senate.

Many interesting old items have been donated for the auction which begins at 3 p.m. Food will begin to be served at 4 p.m. in the afternoon.

Former Detroit Mayor Jerome P. Cavanaugh will address Democrats at 5 p.m. followed by the announcement of the results of the candidate preference poll and the awarding of prizes to lucky ticket holders.

Special contests for youngsters along with a "nature hike" will also be featured during the afternoon get-together. Tickets may be obtained by calling Joe or Lorraine Misiewicz, 434-1853; or Party Headquarters, 665-6529.

County Democratic Chairman Thomas J. Murray has issued an invitation for all interested Democrats to join the picnic crowd.

Jackson Plans Homecoming For Astronaut

When Apollo 15 Command Module Pilot Air Force Lieutenant Colonel Alfred M. Worden returns to his native city of Jackson over Labor Day week-end, he'll find it different than the lonely vigil he experienced orbiting the moon. 10,000 enthusiastic hometown citizens and visitors are expected to fill the Jackson County Fairgrounds for the space hero's Community Welcome at 4 o'clock Sunday afternoon, Sept. 5.

Accompanied by his two daughters, Merrill, 13, and Allison, 11, the 39-year-old Jackson High school graduate is scheduled to land at Jackson's Reynolds Municipal Airport at 1 p.m. that day. On hand to welcome Worden home at the airport will be his parents, Mr. and Mrs. Merrill Worden, of Jackson, along with relatives, friends and several thousand Jacksonians.

The NASA Astronaut will receive a real red carpet welcome, including a police honor guard, bands and a key to the city.

From the airport the Worden party will be ushered to downtown Jackson by automobile cavalcade for a 2 p.m. news conference at the Hayes Hotel.

A parade in Worden's honor will form in downtown Jackson at 3 p.m., march into the fairgrounds, where, at 4 p.m., Jackson will say hello to its famous son with an hour long program of entertainment and presentations. Highlighting the fairgrounds show will be the major public statement by Col. Worden while he is in Jackson.

To complete his Sunday schedule, Worden will appear at Jackson's famous illuminated Cascades fountain Sunday evening. The Cascades activities will conclude with a display of aerial fireworks in honor of Col. Worden and his family.

Subscribe today to The Standard!



MICHIGAN MIRROR

By Elmer E. White, Secretary, Michigan Press Association

Though many persons may have the impression the consumer protection sentiment now prevailing in many areas is a new concept, it really is not.

Consumer Protection Not New
Actually, it's been 100 years since state government first entered the field of consumer protection. Back in 1871 the legislature established an Insurance Department in state government to regulate about 100 insurance companies which were doing business in the state worth \$75 million annually.

Today, that department is part of the State Commerce Department and keeps tabs on more than 1,000 insurance companies which now do nearly \$3 billion worth of business in the state.

Michigan voters were first presented with the idea of consumer protection back in 1870, when a constitutional amendment was placed before them giving the Leg-

islature authority to "pass laws establishing reasonable maximum rates" for passengers and freight on railroads in the state.

The proposal was adopted by the voters and the state's first railroad commissioner, Stephen S. Cobb, took office on April 23, 1873.

Today, seven of the nine bureaus and commissions of the Michigan Commerce Department are responsible for enforcement of hundreds of consumer protection laws which the legislature has passed since it set up an Insurance Department 100 years ago.

One of these seven—the Public Service Commission—is a direct descendant of the office of railroad commissioner. It is responsible for policing all the public utilities in the state.

Four other agencies have their duties spelled out clearly in their names. They are the Cemetery Commission, the Financial Institutions Bureau, the Securities Bu-

reau and Liquor Control Commission. The seventh agency—the Aeronautics Commission has Aer some regulatory powers but is principally considered a "developmental" agency.

The Financial Institutions Bureau would be the oldest agency in the Department of Commerce were it not for the fact that nearly every bank in Michigan folded soon after it became a state.

Michigan's first state legislature established the office of Bank Commissioner in 1835 but abolished it in 1840 after most banks had failed in the panic of 1837. Nearly half a century went by before the office of Bank Commissioner was re-established in 1889.

Computers Help Guide Traffic
Small computers, no larger than a window air conditioner, are now at work providing an accurate, up-to-the-minute picture of traffic on urban highways in Michigan.

Three of the computers, already are operating on highway installations in Detroit, Ann Arbor and Saginaw. Nine more will be installed over the next two years in major cities of southern Michigan where traffic is heaviest.

Statistics gathered by the computers, which are being paid for with federal highway planning and research funds, are used by the State Highway Department to plan and design highways, determine locations for traffic controls and estimate future highway usage.

The computers monitor traffic flow by picking up signals from loops of wire buried beneath each lane of highway. These loops also serve for traffic signal control purposes.

The vehicle count is stored in the computer's memory and is periodically transmitted by a telephone line to a central computer at department headquarters in Lansing. Traffic engineers can obtain the latest traffic counts merely by dialing a number.

Each computer can be connected with up to 16 different highway locations and will scan them simultaneously, thus making the system less expensive to operate than counters which must be attended individually by a person.

Temped to hedge a little on your income tax return? Remember this statistic:

During fiscal 1970, the U.S. Justice Department's Tax Division secured convictions in 95 percent of the tax cases it filed charges on.

Sentences for more than 600 persons who were convicted during the year totaled 251 years in jail, 349 suspended years and 838 probation years. Fines totaled \$1,652,043.

IF YOUR ROOF IS HURTIN' Call Burton!

- ★ Old and New Roofs
- ★ Hot Tar and Metal Roofs
- ★ Aluminum Siding
- ★ Aluminum Awning and Storm Doors and Windows
- ★ Seamless Aluminum Eaves Troughs and Down Spouts
- ★ Mobile Home or Trailer Skirting

**COOPERATIVE
ROOFING & SIDING CO.**
Call 662-5900 or 662-3288
Evenings Call Burton Rathburn, 663-0754

MONEY TROUBLE?

ONE PLACE TO PAY!
Credit Management Service
662-2565
215 South Fifth Ave.
Ann Arbor
State Licensed and Bonded

Howell Livestock Auction

The Wise Owl Sells Ship to Howell
SALE EVERY MONDAY, 2 p.m.
Phone 546-2470, Bim Franklin
Mason 677-8941

Market Report for Aug. 30

CATTLE—

Good to Choice Steers, \$21 to \$23.75
Good to Choice Heifers, \$20 to \$21
Fair to Good Steers, \$20 to \$22
Fair to Good Heifers, \$19 to \$21

COWS—

Fair to Good, \$24 to \$25.50
Good to Choice, \$25 to \$26
Fair to Good, \$24 to \$25
Fair to Good, \$24 to \$25

HEIFERS—

Heavy to Medium, \$26 to \$28.50
Light to Medium, \$26 and down.

CALVES—

Prime, \$40 to \$45
Good to Choice, \$38 to \$40
Heavy to Medium, \$40 to \$43
Cull and Med., \$32 to \$40

FEDERS—

200-300 lb. Good to Choice Heifers, \$22 to \$23
400-700 lb. Good to Choice Steers, \$22 to \$23
200-300 lb. Heifer Steers, \$22 to \$23
500-800 lb. Heifer Steers, \$22 to \$23
Commercial-Med., \$22 and down.

SHEEP—

Wooled Slaughter Lambs:

Choice-Prime, \$26 to \$28
Good to Choice, \$22 to \$24
Slaughter Stock, \$20 to \$22
Foster Lambs, all weights, \$24 to \$26

HOGS—

200-300 lb. No. 1, \$18 to \$19.40
200 lb. and up, \$17 to \$18
200 lb. and up, \$17 to \$18
Light Hogs, \$17.50 and down.

SEALS—

Prime Light, \$16.75 to \$18.25
200-300 lb., \$15 to \$16.75
500 lb. and up, \$14 to \$15

BOARS AND STAGS:

All Weights, \$13.50 to \$16

FEEDER PIGS:

Per Head, \$8 to \$14

HAY—

1st Cutting, 60c to 75c
2nd Cutting, 75c to \$1.15

STRAW—

Per Bale, 50c to 60c

COWS—

Tested Dairy Cows, \$300 to \$425
Tested Beef Type Cows, \$200 to \$300

Established 1871 The Chelsea Standard Telephone GR 5-3581

Excellence Award by Michigan Press Association
1951-1952-1960-1964-1965-1966

Walter P. Leonard, Editor and Publisher

Published every Thursday morning at 800 North Main Street, Chelsea, Mich. 48118, and second class postage paid at Chelsea, Mich., under the Act of March 3, 1879.

ADDRESS CORRECTION REQUESTED

Subscription Rates (Payable in Advance)

In Michigan: One Year \$4.00
Six Months \$2.25
Single Copies \$.15
Outside Michigan: One Year \$6.00
Six Months \$3.50
Single Copies \$.20
Service men or women, anywhere, 1 year \$4.00

MEMBER
NATIONAL PAPER
Association - Founded 1888
National Advertising Representative:
MICHIGAN NEWSPAPERS, INC.
187 Michigan Ave.
East Lansing, Mich. 48823

JUST REMINISCING

Items Taken from the Files of The Chelsea Standard

4 Years Ago . . .

Thursday, Sept. 7, 1967—

Queen of the Chelsea Community Fair is Diane Stoffer. She is the daughter of Mr. and Mrs. John Stoffer, 237 Adams St. She was the Junior Chamber of Commerce candidate, and rode on the JCC float in Saturday's parade.

Kathy Powers, the runner-up, is the daughter of Mr. and Mrs. Robert Powers, 114 South St., and was the CHS Junior Class queen candidate.

The top price of 78 cents a pound was paid by Stop & Shop for Nancy Young's grand champion steer. Kenneth McCalla had the reserve champion steer which sold to Schumm's for 60 cents a pound.

The American Legion float, featuring a replica of the Statue of Liberty was the adult division's top prize winner. Rhonda Kern, daughter of Mr. and Mrs. Richard Kern rode the float and was the Legion's queen candidate.

The sophomore class float was the champion of the youth division. Riding on the float was May Fish, daughter of Mr. and Mrs. Lewis Fish, the sophomore's queen candidate.

Reserve Champion Berkshire winner in the Junior Show at the 118th Michigan State Fair was Howard McCalla, 16, of Chelsea. Howard's prize-winning Berkshire is named Hillview Queen.

Linda Van Riper, driving a tractor in the heaviest class—9,001 pounds and up—pulled her way to a second-place finish in the Tractor Pulling contest held at the fairgrounds. Linda was the only female winner in the event, and received \$15 for her efforts.

First-place winners, each of whom received \$20, were: Up to 4,000 lbs., John Bezzeg, Dexter; 4,001 to 6,000 lbs., Eugene Wahl, Grass Lake; 6,001 to 9,000 lbs., Charles Trinkle, Dexter; 9,001 lbs. and up, Norval Menge, Chelsea.

14 Years Ago . . .

Thursday, Sept. 5, 1957—

The first day of school in Chelsea showed a total enrollment of 1,511 with 947 in the elementary grades and 564 in the high school.

Louis Burghardt was re-elected as president of the Chelsea Social Service in an election held Aug. 28. Mrs. Robert Wagner was elected vice-president; Mrs. E. W. Eaton, treasurer; and Mrs. Sallie Smith, secretary. Other members of the board of directors are: Harold Jones, H. T. Moore, Charles Lancaster, and Mrs. Kent Walworth. Mrs. Louis Ramp continues as supervisor of the social service organization.

Miss Olive Ann Reddeman is one of the eight 4-H boys and girls who were chosen as runners-up in the state-wide achievement competition held during the 42nd annual state 4-H club show.

The eight won an all-expense paid trip to the Canadian National Exposition in Toronto.

Earl Heller won the livestock judging contest at the State 4-H show held in East Lansing this last week. Sixty-five county youths participated in the show, the largest ever held.

Donald Alber, general chairman for the Community Fair Parade said that, weather permitting, the event will begin promptly at 2 p.m. The start of the parade will be marked with a blast from the village fire whistle.

On the program at the fair tonight will be a tug-of-war between Chelsea and Dexter Kiwanians and an amateur show jointly sponsored by the Kiwanians and the Community Fair. Prizes amounting to \$100 will be awarded. Prize beef animals will be sold at 2 p.m. Friday. In the evening the popular tractor pull will be held.

Ted Nixon, son of Mr. and Mrs. Homer Nixon, has been awarded a State Board of Education scholarship for his sophomore year at Western Michigan University. A former captain of the CHS football team, Nixon will be a guard on the WMU varsity football squad this year.

24 Years Ago . . .

Thursday, Sept. 4, 1947—

Friday morning dogs attacked and killed two sheep and injured 13 others belonging to Clarence Koengster. Some of the 13 were so badly injured they had to be destroyed immediately. Others died later in the week. A neighbor saw a pack of dogs among the sheep Friday morning, although the Koengsters did not learn of it until late Friday afternoon. The dogs were not recognized. A week ago 21 sheep on the Whitaker estate farm, occupied by Mrs. Christian Bristle and family, died as the result of an attack by dogs.

Thunderstorms accompanied by high winds and hail caused some minor damage in the area in the

last week. Lightning struck a powerline, following it into the Sylvan Theater and burning out the outside installation at the back of the building. In another storm, lightning hit a large transformer at the Consumers Power Co. substation on S. Main.

Fred G. and Herbert Loeffler, owners of the Central Meat Market at the corner of Main and Park Sts. for 27 years, have sold their business to Alvin Schiller and Raymond Canine.

Elections from Chelsea and 12 rural school districts voted to combine them into a Rural Agricultural District in a special election held Aug. 28. The total vote was 503 in favor, 399 opposed.

34 Years Ago . . .

Thursday, Sept. 2, 1937—

In order to determine the necessity of instituting condemnation proceedings against owners of property along the proposed new route of US-12, a hearing has been called by the State Highway Department for Sept. 8. Nine owners of property along the route were summoned to appear. Those living in the area were: Alfred and Rose Lindauer, Alma J. Pierce, Herman and Minnie Pierce, Etta Steadman, Elba H. and Lella Gage, Lillian Cooper, Mina Cooper, Wiseman, Albert and Pauline Pielemeier, and Mr. and Mrs. Munson Burkhardt.

Two tons of marijuana, a narcotic used extensively by Mexicans in cigarettes, and banned by both federal and state law, were cut down on the Lindley farm in Lyndon township. Officials who discovered and identified the weed said that the owner of the farm was innocent of any wrong doing, having thought the marijuana was just another weed which had spread rapidly this year. He was Chelsea public schools open Monday with a total enrollment of 500, an increase of about 20 over last year.

An order was issued on Monday by Murray D. Van Wagoner, state highway commissioner, authorizing the surfacing of N. Main St. with three inch oil mix. Improvement of N. Main, at a cost of \$14,000 will complete the work of making Chelsea streets dustless.

School Time Is Almost Here Again! IF THE CHILDREN

Need Glasses or Glass Repair

RELY ON

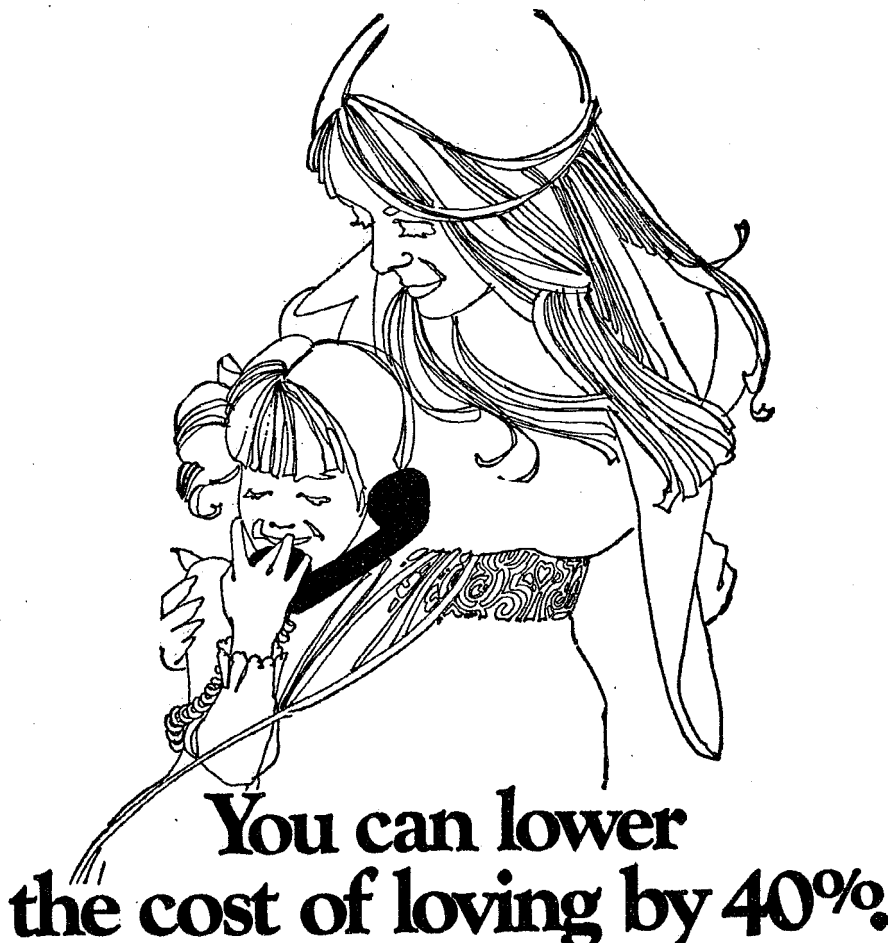
WINANS OPTICAL

PHONE 475-1233

114 N. Main (in Sylvan Hotel) Chelsea, Mich.

DAVID WINANS, Optician

(Formerly with Johnston Optical)



You can lower the cost of loving by 40%.

Now get a 20 or 40% discount everywhere, everytime you call long distance within Michigan. Just dial direct.

There's a little love out there . . . for you. Love you experience all too infrequently.

Why not make a change, with an unexpected call? You'll make two people happy . . . someone you love, and you.

And now you can call anywhere in Michigan weekdays after five, and weekends from five p.m. Friday till five p.m. Sunday, and save 40%, just by dialing direct!

Or dial direct any other time and save 20%.

As always, there's no quicker or more personal way to say, "I love you" than by phone. So, if you want to make two people happy . . . don't hesitate to call!

Here's how to direct dial long distance and save

Mon. thru Fri.	Sat.	Sunday
7 AM TO 5 PM	20%	40%
5 PM TO 7 AM	40%	20%
		40%

Discounts also apply to station-to-station calls in areas where direct dialing is not yet available.





GRAND CHAMPION PEN: Tim Grau (second from right) displays his grand champion lambs, purchased by Michigan Livestock Exchange at the Fat Stock sale held Wednesday night at the Fairgrounds. The three lambs, with a total weight of 272 lbs., were purchased for 36 cents per pound.



GRAND CHAMPION BARROW: Gordon McCalla (left) keeps a watchful eye on his 195-lb. grand champion hog, purchased for 80 cents per pound by the Howell Livestock Auction.

Record High Prices Paid at Fair Livestock Auction...

(Continued from page one)

gan Livestock Exchange, 40c per lb.

Kevin Bradburg, 925 lbs., Hon-neger's, 41c per lb.

Erwin Herrst, 1,085 lbs., Mrs. Kozminski, 41c per lb.

Hogs...

Gordon McCalla's 195-lb. grand champion barrow was sold to the Howell Livestock Auction for 80 cents per pound this year. Last year Howell Livestock Auction paid \$1 per pound for the 225-lb. grand champion barrow raised by Ken McCalla.

The Michigan Livestock Exchange purchased Karen Baldus' reserve champion barrow weighing 185 lbs. for 40 cents per pound.

Owners, pen place, total weight, number of animals, buyer and price per pound for the remaining hogs auctioned at the sale are:

Karen Baldus, champion pen, 350 lbs., two hogs, Washtenaw Farm & Garden, 30c per lb.

Gordon McCalla, reserve champion pen, 350 lbs., two hogs, Robert Burgett, 30c per lb.

Mary Ann McCalla, 3rd, 610 lbs., three hogs, Chelsea State Bank, 24c per lb.

Ken McCalla, 4th, 740 lbs., three hogs, Michigan Livestock Exchange, 23c per lb.

Kathy McCalla, 5th, 710 lbs., three hogs, Chelsea Lumber Co., 24c per lb.

Scott Hosler, 6th, 750 lbs., three hogs, Howell Livestock Auction, 23c per lb.

Sheep...

Danny Grau's 101-pound grand champion lamb sold for \$1.95 per pound to Jiffy Market this year, while Matt Grau's reserve champion lamb weighing 107 pounds was purchased by the Manchester Locker Plant for 70 cents per pound.

Owners, places of the pen or lamb, total weight of the pen or lamb, buyers and price per pound for the remaining animals sold are:

Tim Grau, champion pen, 272 lbs., Michigan Livestock Exchange, 36c per lb.

Lisa Schairer, reserve champion pen, 260 lbs., Wolverine Bar, 33c per lb.

Steve Grau, 3rd place lamb, 103 lbs., Merkel Bros., 46c per lb.

Ken Buxton, 5th place lamb, 110 lbs., Burghardt Funeral Home, 37c per lb.

Jane Buxton, 6th place lamb, 120 lbs., E. G. Mann & Sons, 30c per lb.

Mike Bristle, 3rd place pen, 280 lbs., E. G. Mann & Sons, 34c per lb.

Carol Hosler, 9th place lamb, 85 lbs., McCalla Mobile Feed, 39c per lb.

Tim Gross, 4th place pen, 269 lbs., Michigan Livestock Exchange, 34c per lb.

Scott Hosler, 11th place lamb, 80 lbs., McCalla Mobile Feed, 41c per lb.

Doug McDonald, 6th place pen, 253 lbs., Michigan Livestock Exchange, 32c per lb.

Harold Gross, Jr., 90 lbs., Michigan Livestock Exchange, 32c per lb.

Wendy Wolfgang, 70 lbs., Farmer's Supply, 70c per lb.

First Aid Classes Planned By Red Cross

Red Cross First Aid Classes for the fall have been announced by the Washtenaw County Chapter. Scheduled to start Sept. 13 and 14, each class will meet once a week for six weeks from 7:30 till 9:30 p.m.

All sessions will be conducted at the Red Cross Headquarters, 2729 Packard Rd., Ann Arbor.

Register by calling the Red Cross during business hours.

Let's GO, GO, GO
BACK to SCHOOL

The First Place To Go, Go, Go
Before Back To School Is

DANCER'S

We have a fine selection of
BACK-TO-SCHOOL WEAR

New Boys' and Girls' Shoes

Dresses - Slacks - Blouses

Boys' Trousers - Shirts

Sweaters - Jackets

- SHOP -

DANCER'S

Chelsea's Friendly Dept. Store

CHICKEN BAR-B-Q

SUNDAY, SEPT. 5

Serving from 11:30 a.m. to 3 p.m.

K. of C. Parking Lot—Old US-12 West of M-52

(Between K. of C. Hall and Wolverine)

\$1.75 per serving

Sponsored By K. of C. Council No. 3092

Jiffy market
BIG ENOUGH TO SERVE YOU.....SMALL ENOUGH TO KNOW YOU!
Corner of SIBLEY & WERKNER RDS....CHELSEA, MICHIGAN

7 AM - 10 PM
OPEN 7 DAYS A WEEK
PHONE 475-5701

COMPLETE SUPER MARKET

SALE PRICES EFFECTIVE THURSDAY, SEPT. 2, THRU SUNDAY, SEPT. 4, 1971.

Store Hours Are 7 a.m. to 10 p.m. 7 Days A Week

U. S. CHOICE

STANDING RIB ROAST

99¢ lb.
6 - 7 Ribs

U. S. CHOICE

RIB STEAKS

\$1.09 lb.

BEEF SIDES AND QUARTERS AVAILABLE FOR FREEZER CUT - WRAPPED - QUICK FROZEN

Finest Quality of Old Fashion Meats Nick's Sheboygan County OLD GERMAN SAUSAGES

Summer Sausage - S. C. Old Fashion Wieners - Bratwurst - Polish Sausage - Metwurst Tongue and Blood - Head Cheese - Braunschweiger - Ring Liver - Ring Bologna - Large Bologna... See Duane or Ron at the Deli Case.

FARMER PEET'S
U. S. GRADE 1

SAUSAGE
Large, for slicing
47¢

A HIT AT THE FAIR THIS YEAR!

ALL - BEEF
FRESH

HAMBURGER
69¢ lb.

CAMELOT

HOT DOGS
Smoked - Skinless - Tasty!
2 Lb. Pkg. **\$1.09**

JIFFY MARKET

FRESH BAKERY

Pies - Cakes - Rolls - Cookies

Bread - Cup Cakes - Donuts - Others

Old German Pretzels Wed. & Sat. Afternoons.

- SPECIAL -

FRESH, HOME-MADE COOKIES 49¢ doz.

FRESH MERCHANDISE ARRIVES 1 P.M. EACH AFTERNOON.

CALL 475-5701
SPECIAL ORDER
CAKES 2 DAYS

MEADOWDALE

FRENCH FRIES
5 Lb. Bag **69¢**
FAMILY SIZE

SUNDEE

YOGURT
Assorted Flavors
8-Oz. Crtn. **19¢**

Cigarettes
ALL BRANDS
\$3.39
CARTON

KLEEN-MAID BREAD
1-Lb., 4-Oz. Loaf **19¢**

Glacier Club ICE CREAM
Half-Gallon
A Berden's Product

49¢

COCA-COLA or SPRITE
Family Size 48-Oz. Bottle **39¢**

MICHIGAN

Sour Cream
39¢ pint

VISIT OUR DELI CASE

Bulk Salami
Hunks of Cheese
Pepper Cheese
Lg. Braunschweiger

Pickle Bologna
Salads
Red Hots
Pickle Pork Hocks

FRESH, PURE

Orange Juice
1/2 gal. 49¢

MARATHON GAS PUMPS LOCATED AT **JIFFY MARKET**

Gas as well as Groceries - Meats - Beer - Wine - Bread - Pop - Ice Cream - Household Items

Milk - All at Everyday Low Supermarket Prices!

REGULAR GAS

33.9 gal.
Includes All Taxes

OPEN LABOR DAY
7 a.m. to 10 p.m.

PREMIUM GAS

37.9 gal.
Includes All Taxes

GAS PUMPS & STORE OPEN 7 a.m. to 10 p.m. 7 Days a Week

Ads
Taken
Till 5 p.m.
Tuesday

IT'S EASY TO BUY-SELL-RENT- HIRE & FIND WITH

WANTED ADS

Just
Call
GR 5-3591

WANT ADS

The Chelsea Standard

WANT AD RATES

PAID IN ADVANCE—All regular advertisements, 50 cents for 25 words or less, each insertion. Count each figure as a word. For more than 25 words add 2 cents per word for each insertion. "Blind" ads or box number ads, 35c extra per insertion. CHARGE RATES—Same as cash in advance, with 15 cents bookkeeping charge if not paid before 5 p.m. Tuesday preceding publication. Pay in advance, send cash or stamps and save 15 cents. DISPLAY WANT ADS—Rate, \$1.10 per column inch, single column width only. 8-point and 14-point light type only. No borders or halftone type. Minimum 1 inch. CARDS OF THANKS or MEMORIALS—Single paragraph style, \$1.00 per insertion for 50 words or less; 2 cents per word beyond 50 words. COPY DEADLINE—6 p.m. Tuesday week of publication.

THE BEAUTIFUL BRUTES are here! Alone, snowmobiles. Come see them at Han-Co Winter Sports, at 15901 Seymour Rd., or call 475-7212. 34tf

All Insurance Needs

In the convenience of your own home — or mine

N. H. Miles, Allstate

Call GR 5-8334 after 6 p.m. 45tf

STORE HOURS—Sept. 7 through Sept. 11, Saline Fair hours for All Nalli Music Store will close everyday at 3 p.m. Closed all day Thursday and Saturday. Visit our fair booth. 12

ALL YARN 1/2 OFF

DANCER'S BASEMENT

BUS DRIVERS

Urgently Needed

Call 426-4314 x11

8th Annual PICK-UP SALE

All Prices Reduced!
Over 30 in Stock!

ONLY \$2295

For a brand new 1971 Ford, 1/2 ton P-100 Pick-Up with Fresh Air Heater, Back-up Lights, Side Mirror, Chrome Grille, Chrome Bumper, Spare Tire and fully Synchronized Transmission.

Our Sales Staff:
Lyle Chriswell - John Popovich
Bob Rentschler - George Palmer

PALMER FORD

Since April 1912
Phone Chelsea 475-8271

Open Monday, Wednesday and Thursday 9 a.m. to 5 p.m. Tuesday and Friday 9 a.m. to 5 p.m. All day Saturday. x11

WANT ADS

BOARDING, trimming, training. Town and Country Kennels, Jackson Rd. at Baker. NO 3-7200. 7tf

Gem Travel Trailers

PICK UP COVERS

4' ————— \$100.00
26' ————— \$179.00 and up

Triangle Sales

Chelsea 475-2302 40tf

CONVALESCENT CARE available for elderly lady. 475-8935. x11

CLOGGED SEWER

Reynolds Sewer Service

We Clean Sewers Without Digging
Drains Cleaned Electrically
FREE ESTIMATES
2-YEAR GUARANTEE
Phone Ann Arbor NO 2-5277
"Sewer Cleaning Is Our Business—
Not a Side Line." 38tf

KNAPP SHOES

For Cushion Comfort

Robert Robbins

475-7282 48tf

LOST—Long-haired gray, female kitten. Near Taylor and Lincoln Aug. 25. Ph. 475-6741 after 4 p.m. 11

HENS FOR SALE—Due to ill health I am selling all my hens. 50 Klager's strain white Leghorns, laying around 60 percent. Yarning hens, 50 cents each. About 100 older hens, 25c each. White Leghorns. Dan Emmons. 1/2 mile N.W. of Waterloo Village on Waterloo-Munith Rd. Phone 475-4081. -11

FOR SALE—Davenport, good condition. Ph. 428-8079. 11

GARAGE SALE—Thursday and Friday, Girls clothing, sizes 7 to 10, toys and misc. items. 10 a.m. to 5 p.m. 8872 Sibley Rd. Chelsea. 11

FREE—2 kittens, each one looking for a home, nine weeks old and full of love. Call Tracy Barr, at 475-2035. 11

ELECTRIC DRIVE cement mixer on wheels; bin-type wheelbarrow; 4-cycle B & S snowblower, 1 year old, 150 feet. No. 10 twist-lock cord; 7-inch Porter-Cable for edger; Speedmatic 8-inch drum sander. Will deal for rototiller. Phone 475-8925. 11

ALCOA SIDING with Remodeling—Since 1938. Prompt service, professional workmanship. William Davis Contractor. Ann Arbor, Mich. Estimats, no obligation. Phone (313) 663-6635. Completed work near you. -x23

Hearthside Yarn Shop

5450 Conway Road

Yarns, needles, accessories

Free instructions in knitting and crocheting with follow-up assistance.

Orders taken for hand-made items.

Ph. 475-2014 36tf

FORMAL WEAR

RENTAL SERVICE

Proms - Weddings - Special Events
6 different colors.

Foster's Men's Wear 48tf

WANT ADS

ROBERT PATRICK for home improvement, building and maintenance. Ph. 475-7460. 46tf

HAMMOND ORGAN teachers wanted to teach in their own homes. Call Grinnell Brothers, Ann Arbor, 662-5687. 34tf

CALL FRANK for all your carpet cleaning jobs, morning or week-end. Needs only 8 hours to dry. Only 10c per square foot. Phone now for free estimate, 761-4328. All work guaranteed. 38tf

PIANO TUNING, Chelsea and area. Facilities for reconditioning and rebuilding. Used piano sales; reconditioned grands and verticals. E. Eklund. 426-4429. x50tf

Contractor Servicing Chelsea, Dexter and Manchester Areas

Complete Home Remodeling
Inside and Outside

Specializing in extra living space, recreation rooms, kitchens and paneling. Installing all aluminum products, 5" eavestroughs, custom-made awnings, windows and doors, aluminum siding in many selected colors and styles.

Please Call

DALE COOK

Chelsea 475-8863 30tf

CHELSEA

School District

Five Beautiful

Country Sites

in

Noah Heights

Adjacent to Half

Moon Lake State Park

Model Open 2-6

Sat. and Sun.

Any time by appointment

Featuring

- Carpeting throughout
- 2-car garage
- Full basement
- Hotpoint stove and refrigerator
- All aluminum exterior
- Concrete porches, sidewalk, gravel drive
- Storms and screens

COME OUT AND TALK TO US
ABOUT OUR WIDE VARIETY
OF HOME PLANS.
We know you will be pleased.

W. C. Weber

Construction Co., Inc.

12290 Jackson Rd., Chelsea, Mich.

475-2828 663-1935 475-4977

CHELSEA'S PREMIER BUILDER x8tf

BABYSITTING—Would like to take care of a child in my home. Prefer 3-year-old. Ph. 475-2772. 12

APARTMENT FOR RENT—Lake-side, furnished one-bedroom, one-car attached garage, all utilities paid, professional person desired. 761-7600 days, 475-2761 evenings. 11tf

APARTMENT FOR RENT—Furnished, 1 bedroom, upstairs, 475-8911. 11tf

BLUEBERRIES

READY

20c per pound

You Pick

From Dexter take Dexter-Pinckney Rd. west to Island Lake Rd., then to Dancer, left on Dancer 1 1/2 miles to Beach Rd., go 1/4 mile on Beach to 10804 Beach. 3/4 mile east of Four Mile Lake, 3 1/2 miles from Dexter. Bring your own container. -12

ELECTROLUX

VACUUM

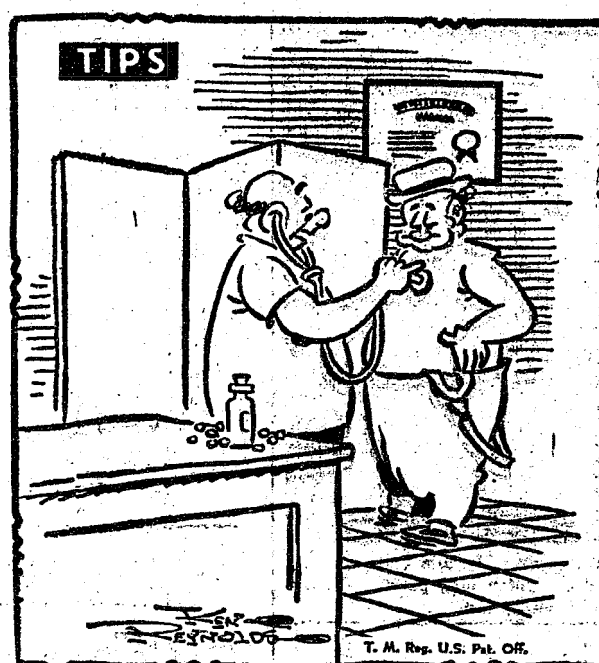
CLEANERS

SALES and SERVICE

JAMES COX

Ph. 428-2931 or 428-8221

Manchester



"Contrary to what your son said about you wanting to sell his guitar with a Standard Want Ad—your heart is still in the right place!"

WANT ADS

WORK SHOE

HEADQUARTERS

Famous Red Wing Brand

\$12.95 to \$26.95

Foster's Men's Wear 34tf

IT'S inexpensive to clean rugs and upholstery with Blue Lustre. Rent electric shampooer \$1. Dancer's. 10

THORNTON

475-8629

BUILDING SITES

3 ACRES rolling—Terms.

3 ACRES wooded—Terms.

LAKEFRONT—Cavanaugh Lake.

LAKEFRONT—Portage Lake.

ISLAND LAKE—Very lovely brick ranch home situated on a peninsula of stately oak trees. Magnificent view, fireplace, screened porch-patio, fully carpeted and many other extras. Terms possible.

RANCH HOME—Large lot, attached 2 1/2-car garage, screened porch, close to downtown, are some of the features which make this 3-bedroom home great for a family.

HALF MOON LAKE—Sharp 2-bedroom home, wooded yard with good lake access, \$16,900.

CAVANAUGH LAKE—Lakefront, trees, fully carpeted, vinyl siding, electric heat, 1 1/2-car attached garage, are but a few of the many fine features of this completely renovated 12-year-old home. You must go through this home to appreciate it. Terms possible.

MULTIPLE LISTING

John C. Pierson

ASSOCIATE

or

Robert H. Thornton Jr.

REALTOR

105 N. Main, Chelsea

475-8629 eve. 475-2064, 475-8857

11

TYPING—Would like to do typing at home. Ph. 475-2772. 12

HURRY! HURRY! North Lake Mini-Putt will be open Friday, Saturday and Sunday only during the month of Sept. Open 4 to 10 p.m. Open Labor Day, noon to 10 p.m. Located corner of Stofor and N. Territorial Rds. Play mini-golf—it's fun! 15

11tf

11tf

11tf

11tf

11tf

11tf

11tf

11tf

11tf

11tf

11tf

11tf

11tf

11tf

11tf

11tf

11tf

11tf

11tf

11tf

11tf

11tf

11tf

11tf

11tf

11tf

11tf

11tf

11tf

11tf

11tf

11tf

11tf

11tf

11tf

11tf

11tf

11tf

11tf

11tf

11tf

11tf

11tf

11tf

11tf

11tf

11tf

11tf

11tf

11tf

11tf

11tf

11tf

11tf

11tf

11tf

11tf

11tf

11tf

11tf

11tf

11tf

11tf

11tf

11tf

11tf

11tf

11tf

11tf

11tf

11tf

11tf

11tf

11tf

11tf

11tf

11tf

11tf

11tf

11tf

11tf

11tf

11tf

11tf

11tf

11tf

11tf

11tf

11tf

11tf

11tf

11tf

11tf

11tf

11tf

11tf

11tf

11tf

11tf

11tf

11tf

11tf

11tf

11tf

11tf

11tf

11tf

11tf

11tf

11tf

11tf

11tf

WANT ADS

SEE US for transit mixed concrete. Klumpp Bros. Gravel Co. Phone Chelsea 475-2580, 4920 Loveland Rd., Grass Lake, Mich. x4015

TRAVEL TRAILERS—13 ft. and up; 10x55 ft. trailers. John R. Jones Trailer Sales, Gregory, Mich. Phone 498-2855. x481f

CAR RENTAL by the day, week, end, week or month. Full insurance coverage, low rates. Call Lyle Christwell at Palmer Motor Sales GR 5-3271. x25tf

CAR & TRUCK LEASING. For details see Lyle Christwell at Palmer Motor Sales, GR 5-3271. x45tf

FOR SALE—1/2 ton briquet coal, \$10; must be carried out. Phone 475-2580 after 6 p.m., no calls Saturday or Friday evening. x61f

EXPERIENCED CHILD CARE in my home, any time. Phone 761-8701 after 6 p.m. x5tf

MOTHERS! Here's a job you can handle. Have a debt-free Christmas plus earn \$1,000 or more from August to December. Adorable toys, 80 percent at \$3 and under. No gimmicks, collecting, or delivering. No cash investment. Free supplies. For information without obligation call collect: 426-2041, (517) 468-3477, or (517) 371-2948. x15

FLOOR COVERINGS

STAIR & HALL RUNNER—Nylon, rubber back, 27 inches wide. In red, green and gold. \$1.19 per running ft. x11

ARMSTRONG Quakerstone Linoleum. Several patterns in 9" and 12-ft. widths. Per sq. yd., \$1.59. x11

MERKEL BROS.
Open Mon. & Fri. 'til 9
Phone Chelsea 475-8621 x11

WANTED—Authentic American Indian paraphernalia. Arrowheads, to wearing apparel. Phone 475-2907 or Write 1100 Sugar Loaf Lake Rd., Chelsea. x11

FOR SALE—Elgin 14' boat and trailer, Sea King 20 h.p. motor, G. E. gas dryer, swing set. All in excellent condition. Ph. 475-8994. x11

REDUCE EXCESS FLUIDS with Fluidex. \$1.69. Lose weight safely with Dex-A-Diet, 98c, at Chelsea Drug. x15

HOUSEWIVES! MOTHERS! The "in place" this year. House of Lloyd. No collecting. No delivering! Free supplies! Bonuses! Weekly pay! Free gifts! Call Margaret, 663-8998. x13

TRENCHING—Water, electrical lines, footings, etc., 4 to 14 inches wide, 0 to 6 feet deep. Call Charles Slocum, 475-7611 evenings. x61f

YARD SALE—Antique chairs and dishes, miscellaneous luggage, and giveaways. 221 Congdon, Chelsea. Saturday, Sept. 4, 9:30 to 5:30. x11

WANT ADS

FOR SALE—Decca electric guitar, used one month. Also, size 9E football shoes, only used once. Phone 683-3228. x461f

FOR SALE—Potatoes, Improved Cobblers, \$3 per bushel. Fredrick Ewald, 20337 Old US-12. Call any day except Saturday, 475-8866. x1d

WINTER BOAT STORAGE—In-land. Reasonable rates. Young's Store & Marina. Phone Gregory, Mich., (313) 498-2825. x13

THE LITTLE FLOWER SHOP

3451 Waltrous Rd., Chelsea
Phone GR 5-8508
Flowers, corsages, arrangements and plants.
Weddings and funerals. x47tf

WILL DO BABYSITTING in my own country home, by elderly lady. Any age. Phone 475-8033 any time. x15

MITTENS HAD KITTENS—Free. Litter trained, 10 weeks old. Call 475-2954. x11

FOR SALE—Simplicity 616 garden tractor, with plow, chains, mower, trailer with racks. Phone 475-7873. Bart Wellnitz. x10tf

FOR SALE—Williamston gas furnace, 125,000 BTU's, Phone 475-7216. x11

RUSTIC LODGE

Beautiful architect-designed, year-round lodge built of tamarack logs and cypress. In Inverness Country Club area, on lake, walk to golf membership available. Dramatic living room has massive stone fireplace, high beamed ceiling and balcony. Four bedrooms. Spacious property has large garage and storage. \$68,000 completely equipped. By appointment, owner, 475-7094. x11tf

QUIET—Newly decorated room, carpeted. For teacher or working woman. Three blocks from downtown. Ph. 475-8058. x12

10 ACRES with garage for lease, 1/2 mile N. of, across from North school. Phone 1-498-2863 week-ends. x13

FOR SALE—Prigdiere refrigerator, or perfect condition, also hide-a-bed. Ph. 475-8310. x11

BIG GARAGE SALE—2-family. Friday, Sept. 3, 9 to 4, lots of baby and toddler clothes, girls school clothes, size 6x to 8, snowsuits, reversible winter coat, size 7, misc. adult clothing. Thor man- gile, misc. dishes, some furniture, playpen, high chair, antique crib, lawn furniture, picnic table, lots of antiques, curtains and drapes. 422 Madison, Chelsea. x11

WANT ADS

GUITAR INSTRUCTION. Classical, folk, pop. Emphasis on theory. Only \$3.50 for 1/2 hour. Phone 475-1129. x11

CHELSEA New Listings

2,500-SQ.-FT. Living area. 4-bed room, formal dining room, large kitchen, family room, living room, bedroom and bath, all on 1st floor. 3 bedrooms and bath, 2nd floor. Screened porch, 2 car attached garage, finished rec room, electric heat. Ideally located on 1 acre with lots of trees. x11

LAKE-FRONT—Half Moon Lake. Electric heat, 2 lots. Beautiful setting, trees, dock, raft, and most furniture included. Priced to sell at \$24,900. x11

INCOME PROPERTY, close to downtown Chelsea. One 4-bedroom unit and one 2-bedroom unit. Excellent location. Separate furnaces, electric and water heaters and gas meters. Priced to sell at \$24,900. x11

4-BEDROOM, basement, 2 full baths, all fenced-in yard, apple trees, peach trees. Priced to sell at \$27,000. x11

1 ACRE—All brick, 2-bedroom ranch home, 2-car attached garage, 2 fireplaces, dining room. Priced to sell at \$44,800. x11

2 ACRES, 2,500 sq. ft. ranch home, 4 bedrooms, study, 2 1/2 baths, family room, fireplace. Chelsea schools. x11

MANCHESTER—Large Early American home, used as single apartments, could be single family. Fireplace, 3 baths, dining room, large lot. x11

Frisinger Realty Co.
Chelsea 475-8681
George Frisinger, 475-2903
Paul Frisinger, 475-2621
Herman Koehn, 475-2613
Hope Bushnell, 475-7180

Serving
Ann Arbor
Chelsea
Dexter
Manchester
Member of Multiple Listing Service 10tf

ST. BERNARD PUPPIES—Three roly-poly males left. 426-3889. x12

FOR SALE—Two fine wool rams, one Shropshire ram. Call after 4 p.m. 475-8871. x12

FOR SALE—6-year-old beautiful Appaloosa gelding, \$150 without tack. Also 1 cross-bred ram lamb. \$40. Phone 475-2573. x11

WANT ADS

GARAGE SALE—1122 Western, Ann Arbor. Sept. 2-3-4. Anytime. Antiques, primitives, collectibles, junk. x11

CLOSE-OUT

On All
Air Conditioners
and
De-Humidifiers
Save Up to 20%
HEYDLAUFF'S
113 N. Main St.
Phone GR 9-6651 x11

CONTINUOUS BREEZEWAY SALE—Antiques, miscellaneous baby equipment, household items, and toys. Cornet, trombone, new hand-knitted horse sweater, handmade gift items. 10 a.m.-8 p.m. 6804 Joy Road, Dexter. x11

PONIES—Welsh Shetland mare, \$75. Shetland pinto gelding, \$55. Includes tack. 426-3889. x12

HENS, LIVE—60 cents. Call orders in advance. 426-3889. x11

Harper Sales & Service
Will Be Closed
Sept. 3, 4, 5 and 6 x11

Planning A Bathroom?
Then visit our new bathroom displays.
Complete line of bathroom fixtures and vanities.
PLUMBING, ELECTRICAL and HARDWARE
"HILLTOP"
1414 South Main St.
Chelsea, Mich. 48118
475-2949 x11

YARD SALE—Household goods, handymen items, books, clothes, antiques, and lots of other items. Starts Friday, Chapla Orchards, 1817 Rank Rd., 7 miles west of Chelsea off Old US-12. x12

24 FT. RATTI—40 h.p. Johnson motor, A-1 condition, \$1,395. 1964 Ecotoline Ford van, selling for parts. Ph. 479-6468. x11

HELP WANTED—Part-time or full-time secretary, able to handle confidential work, shorthand desirable. For interview phone 475-2888 or 475-7343. x11

WANT ADS

1960 WILLYS—4-wheel drive, 1-ton pickup. New engine, good condition. 475-2567 after 5 p.m. x11

Demonstrate SHOPPER SHOWS

Toys and Gifts
For 3 months and earn a GUAR- ANTEED MINIMUM average of \$3.00 an hour at parties. Color Catalog. Top brand names.
Call Collect, Ypsilanti
482-6330 or 483-3839 x14

FOR RENT—2-bedroom, year-round home on lake. Ph. 1-477-8835. Sat. & Sun. Ph. Gregory 498-2486. x11

GARAGE SALE—Small household items, toys, clothes. Sept. 2-3-4, 10 a.m. to 4 p.m. 5800 Stofer Rd. x11

Temporary Positions

Positions open for women on both day and afternoon shifts.
Four-day week.
No experience necessary.
Work will last approximately Sept. 15 through Dec. 15.
Call 426-4666 for interview appointment. x11

Lyndon Color Labs

A Division of KMS Industries
7200 W. Huron River Dr.
Dexter x12

GARAGE SALE—You name it, we've got it, from big to little. Starts Thursday, ends when everything's sold. 186 Dewey St. x11

FOR SALE—Two step-type end tables and matching coffee table. \$25. Ph. 475-8777 after 4 p.m. x11

CARD OF THANKS
I would like to express my thanks to friends and relatives for their concern during my recent hospitalization at Chelsea Medical Center.
Lester Esch. x11

CARD OF THANKS
We wish to thank our friends, neighbors and relatives for the beautiful cards and gifts that we received for our golden wedding anniversary and a thanks to all of those who in any way made the occasion a very happy one for us.
Mr. and Mrs. Ezra Lesser. x11

THANK YOU
We wish to express our thanks and appreciation to our relatives, neighbors and friends for their messages of sympathy, beautiful floral offerings and their many acts of kindness shown us at the time of our bereavement in the loss of our beloved mother. A special thanks to the pallbearers, Rev. Collins, and the Staffan Funeral Home for their help and kindness.
The family of Chloe B. Weeks. x11

THANK YOU
We would like to say a big "Thank you" to the many people involved with the Fair Queen Pageant. To the Fair Board for the co-operation we received and the gifts they gave to the Queen Candidates. To the following merchants who gave generously to the Fair Queen: Chelsea Lanes; Stop & Shop; Jiffy Market; Dairy Queen; Gambles, Western Auto; Groves, Chelsea Drug, Dancer's, Nalli Music Store, Village Beauty Salon, Tail Feather Boutique and the House of Orient. Their donations contributed to the success of the Fair Queen Pageant.
Sincerely,
Judy Eubanks,
Gloria Greenleaf
and Joanne Rowe,
Fair Queen Committee. x11

Enrolling at CMU
Eileen Bristle, daughter of Mr. and Mrs. Leroy Bristle, 1020 Old US-12, will be attending Central Michigan University this fall. A 1971 graduate of Chelsea High school. x11

Personal Notes

Miss Lisa Ellen Genthner of Hanover Park, Ill., returned home by plane Saturday after spending two weeks visiting her grandparents, Mr. and Mrs. Floyd Genthner, 316 Jackson St., and other relatives. Miss Tracy Ann Genthner of Ypsilanti also spent several days visiting with her grandparents and cousin Lisa. x11

Mrs. Ezra Heininger entertained a birthday gathering honoring her daughter, Mrs. Alvin Wahr, Wednesday, Aug. 25. There were 16 ladies present. A birthday cake was made by a friend, and refreshments were served by the hostess. Mrs. Wahr received many useful gifts. x11

THANK YOU
I wish in this small way to express my thanks to those who helped to make the 1971 Chelsea Community Fair a success.
First of all, to Earl Heller as chairman of the Building Committee, for his untiring efforts in seeing that the Fair Services Building was completed for the Fair. x11

To Arthur Lindauer for designing the building.
To the contractors who helped to bring our building to completion before fair time: John Klink, Roehm (Masons), Rowe Plumbing, John Steele (Sheet Metal and Heating), D. L. Hamlin, Merkel Bros. Furniture, W. E. Farrell Sheet Metal, Heller Electric, Michigan Consolidated Gas Co. and Michigan Bell Telephone Co. x11

Thanks to Mrs. Bailey for all the equipment for the kitchen.
A very special thank you to the Boy Scouts for their gift and erection of the flag pole and also the state flag. Thank you very much. Also for their work at the gates and parking of cars. x11

Thanks to Pat and Bill Robbins for their very fine job of overseeing the Fair Kitchen. Thanks again. x11

To Walt and Sandy Zeeb for the flowers in the dining room and paint for the horse barn.
And to the Kiwanis Club for curtains for the dining room. x11

A special thanks to Mrs. J. Botsford and her helpers for making the curtains and painting the horse barn. x11

To Leonard Reith for building the horse judging stand.
Thank you to Don Turner for his many hours with the loud speakers. x11

A special thanks to the Auxiliary Police and the Village Police Department.
Thanks to Sheriff Doug Harvey for providing us with a watchman each night. x11

I know I have missed a lot of names, but I wish to thank each and everyone who in any way had a part in the Fair. It was your fine co-operation that helped to make this fair a success. x11

There is one more person I would like to give special thanks to for his many calls, letters, etc. This is our secretary, Edward Keizer, and his wife, Chris, for all her typing and phone calls. He is one who is not in the limelight but without him our fair would not go on. Thanks, Ed. x11

Again, I want to thank each and everyone for helping to make 1971 a better fair. x11

Sincerely,
Allen R. Broesamie,
President,
Chelsea Community Fair. x11

THANK YOU
Thanks for all the cards and flowers I received and all the friends that called on me while I was at the Chelsea Medical Center. x11

Mrs. Joe Hafner. x11

THANK YOU
We would like in this way to thank Ted and Elsie Balmer for allowing us to use their garage to prepare our float for the fair parade. It was greatly appreciated. Stockbridge Squares. x11

THANK YOU
We want to thank Mr. Dorer, Mr. and Mrs. Bertke, Mr. Grau, and Mrs. Leach for all their wonderful help. It certainly was appreciated. Thank you so much. Class of 1975. x11

Awards Given at Ladies Day

Inverness Country Club held its annual Ladies Luncheon Thursday, Aug. 26.
On Thursday, the women played Fun Day Golf, prepared by Bolly Wint and Lucille Forest. Many prizes were presented. x11

Following a salad pot-luck luncheon, season awards were presented.
Ladies Day award for most improved golfer went this year to Arlene DeWolf of Hamburg. Ringers winners were Alice McGinn, Jeanette Smith, D. Foster and S. Doyle. x11

Trophies from the Junior Girls tournament were presented to Junior club champion Jeanne Hasel-schwardt and runner-up Elinor Musdolf, by Tish Preuss. x11

The husband and wife handicapper winners this year were Gus and Doretha Schreer of Fowler-ville. x11

Club champion in the Low Gross Tournament was Lucille Forest of Hamburg. Runner-up was Betty Farrell of Dexter. x11

Winners in the first flight were Eleanor Reynolds of North Lake, first, and Emma Jane Admas, North Lake, runner-up. x11

Alice Schneider of Dexter was winner in the second flight, Arlene DeWolf of Hamburg was runner up. x11

Winners in the third flight were Florence Broegman of Hamburg, first, and Dorothy Foster of Ann Arbor, runner-up. x11

Few Openings Left At Co-Op Nursery
Mrs. Ronald Mull of the Co-Operative Nursery has announced that there are only limited openings left at the nursery this fall. x11

There are still two openings in the three-year-old morning session, and two openings in the afternoon non-assist program. x11

Anyone interested in the nursery may contact Betty Mull, 475-5411. x11

Fair Premium Awards List
Published on Pages 10-11-12. x11

Here is an interesting story mailed to us by a friend . . .
"Mr. Some-One, Mr. Every-One, Mr. Any-One and Mr. No-One were neighbors. They all belonged to the same church . . . But, they were rather strange people. Mr. Every-one usually went fishing or golfing on Sundays. Mr. Any-One wanted to worship more often but was afraid Mr. Some-One would not speak to him. So, No-One went to church. No-One did the visitation. When work was required in or for the church, Every-One thought Any-One could do it. But Any-One thought Some-One could and should do it. So what happened? No-One did it. x11

When a fifth (unchurched) neighbor moved in the neighborhood, Every-One thought Any-One should invite him to worship in their church. No-One thought Some-One should at least try. So, what happened? No-One did it!" x11

We leave it to your own judgment whether the story has merit — or significance . . . BURGHARDT FUNERAL HOME, 214 East Middle St., Chelsea, Mich. Phone GR 5-4141. x11

SPECIALS

8-OZ. BOTTLE
Pepsi-Cola 8 pac 57c
Also: Mountain Dew, Orange and Grape Plus Deposit
Case of 24 - \$1.65 x11

MILLER'S
Ice Cream Sandwiches, 10c
ECKRICH SMORGAS-PAC
Lunch Meats, 1-lb. pkg. 79c
12-OZ. BOX
Chipos Potato Chips . . 53c
200-COUNT PAGE
Napkins 2 pkgs. 49c x11

We Have Howell Honey Sweet Melons
KUSTERER'S
FOOD MARKET
DIAL 475-2721 WE DELIVER x11

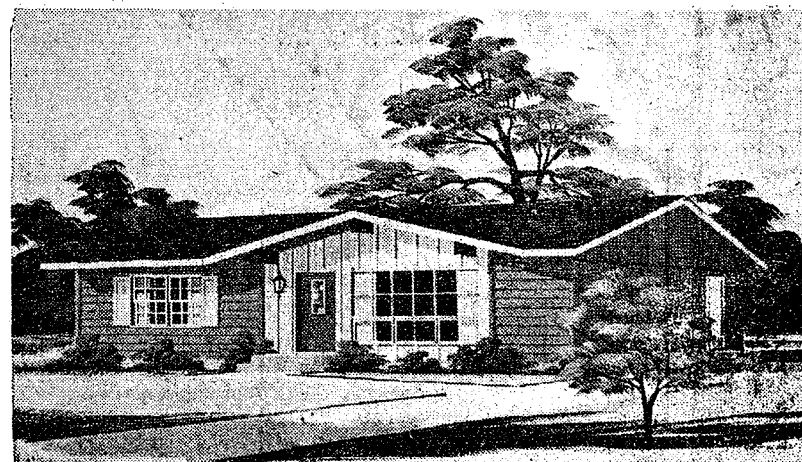
BANK AUTO LOANS ARE BEST!



ANY TRIP YOU MAKE will be more pleasant, if the car you drive is financed the Bank Way—economically, conveniently and with local people! x11

CHelsea STATE BANK
Member Federal Reserve System FDIC Member Federal Deposit Insurance Corp. x11

MOVE UP TO THE GOOD LIFE IN NOAH HEIGHTS



YOU'LL GET MORE OF WHAT YOU WANT A HOME FOR!

Best homes are perfect for a growing family. They're the cream of the crop. Real, old-fashioned craftsmanship. Quality features. Big lawn for the kids. Everything you could ask for in a home. The living's great in a Best home. x11

- ★ Carpeting throughout
- ★ Full Basement
- ★ Hopoint Stove and Refrigerator
- ★ All Aluminum Exterior
- ★ 2-Car Garage
- ★ Storms and Screens
- ★ Your Choice of 100 Plans and Elevations
- ★ \$2000 Allowance for Well, Septic Tank and Drain Field

OPEN SATURDAY and SUNDAY 2-6 P.M.

NOAH HEIGHTS

Model Furnished by Merkel Brothers Furniture of Chelsea

W. C. WEBER
Const. Co.
Chelsea's
Premiere Builder



OUR RANCH MODEL may be seen from 2-6 p.m. Take North Territorial Rd., west off Dexter-Pinckney Rd. to Hankerd Rd. The model is on Rainbow Dr. just off Hankerd. x11

Office No. 475-2828 "Dial-a-home" No. 475-1262 Model No. 475-4977
BLUE RIBBON HOMES FEATURING REAL OLD-FASHIONED CRAFTSMANSHIP

Community Calendar



American Legion Auxiliary, regular meeting 8 p.m. Tuesday, Sept. 7, Legion Home Cavanaugh Lake. Installation of officers to follow.

Chelsea Rebekah Lodge fall meeting, 8 p.m. Sept. 21 at the Hall. Members are invited to attend Harmony Lodge Dexter, Sept. 20 for initiation.

PNG Club of Chelsea Rebekah Lodge at the home of Mrs. Luther Hale, Cavanaugh Lake, 7:30 p.m. Sept. 14.

Chelsea Community Farm Bureau regular monthly meeting 8 p.m. Sept. 9. Clifford Heydlauff and Everett Van Riper will be hosts. Place will be announced next week.

Phoebe Circle of the Methodist church, Wednesday, Sept. 15. Meet at the church at 12 noon to go to the home of Mrs. Robert Harris for pot-luck dinner. Bring dish to pass and own table service.

Cavanaugh Lake-North Sylvan Grange with Mr. and Mrs. Roy Kalmbach, 17516 Fahrner Rd., Sept. 7 at 8 p.m. Bring your own dishes.

American Legion and Auxiliary hospital equipment available by contacting Loren Keezer at 475-2766 or 475-3431.

Inquiries regarding the Chelsea blood bank may be directed to Harold Jones in the event that Mrs. Dudley Holmes is unavailable, or to Mrs. Pauline McKenna, American Red Cross in Ann Arbor, 971-5800.

TOPS Club at library, Wednesday afternoon group, 12:30 p.m. For information call 426-4549. Tuesday evening group, 8 p.m. For information call 475-8952.

CHELSEA FINANCE CORP.
\$25 to \$1,000
For Any
Worthwhile Purpose

See or Call
FRANK HILL
at 475-8631

111 PARK STREET
CHELSEA, MICH.

Regular meeting of Olive Chapter 108 Wednesday, Sept. 8, at 7:30 at the Masonic Hall.

Case family reunion, Pierce Park, Sunday, Sept. 5, at 12 noon.

Herbert J. McKune American Legion Post No. 81 regular meeting Thursday, Sept. 2 at 8 p.m., Legion Home.

Washtenaw County Association of the Order of the Eastern Star will meet in Ypsilanti, Sept. 11. Reservations for dinner must be in by Sept. 4.

Limaneers, at 12:30 p.m. Thursday, Sept. 2 for a pot-luck dinner at the home of Mrs. Fred Kennedy.

Civil Defense officials remind "Tornado watch" means that weather conditions indicate a tornado may develop. "Tornado warning" means that an actual tornado funnel has been sighted. Information is available at the Chelsea Municipal Building or by contacting Elwyn Beach, civil defense director, 479-6031.

BIRTHS

A daughter, Kimberly Kay, Aug. 25, to Mr. and Mrs. Myron C. Clark.

A son, Matthew Brady, Aug. 25, to Mr. and Mrs. William T. Koernke, Jr.

A son, Scott Allen, Aug. 23, to Mr. and Mrs. James A. Cordell, Gregory.

Early Copy Needed For Next Week's Issue

Because of the Labor Day holiday Monday, Sept. 6, all news and advertising copy deadlines will be one day earlier. Please submit as much copy as possible before noon Saturday.

Detroiters Will Observe 50th Anniversary

Mr. and Mrs. Allen J. Burns will celebrate their Golden Wedding anniversary Sept. 14. They were married on that date in 1921 in Most Holy Trinity church, Detroit.

Mrs. Burns is the former Margaret Theresa Weick of Chelsea. She was born Jan. 9, 1898. She is currently a patient in the Georgian Northwest Nursing Home, 16181 Hubbell Ave., Detroit.

DEATHS

Mrs. George Weeks

Sharon Township Resident Dies at Jackson Hospital

Mrs. Chloe B. Weeks, 82, 3019 Washburn d., Grass Lake, died Aug. 24 at Foote Memorial Hospital, Jackson.

Born Dec. 18, 1888 in VanWert, O., she was the daughter of Mr. and Mrs. Peter A. Danison. She married George B. Weeks. He died Jan. 11, 1946.

Mrs. Weeks came to Michigan in 1923 and had lived for the past 24 years at the Washburn Rd. address.

She is survived by three sons, Albert, Grover and Robert, all of Chelsea; six daughters, Mrs. Oscar (Nina) Widmayer, Chelsea; Mrs. Carl (Ruth) Conrad, Napoleon; Mrs. Mary Kelly, Clark Lake; Mrs. June Esch, Chelsea; Mrs. Donald (Beryl) Littlejohn, Bronson, and Miss Marjorie Weeks, Jackson. A son, Glenn, died Aug. 25, 1968.

She is also survived by one sister, Mrs. Elsie Hoffman, Grass Lake, 13 grandchildren and 15 great-grandchildren.

Funeral services were held Friday, Aug. 27 at 2 p.m. at the Stefan Funeral Home with the Rev. Paul J. Collins officiating. Burial was in Oakwood Cemetery, Grass Lake.

Mrs. John Dvorak

Lyndon Township Resident Dies at Convalescent Home

Mrs. Anna C. Dvorak, 16693 Waterloo Rd., died Aug. 26 at the Sunnyside Convalescent Home in Ypsilanti where she had resided since June, 1969.

Born Dec. 16, 1889 in Sylvan township, she was the daughter of John and Anna Kennedy Walsh.

She married John F. Dvorak who died in Feb., 1916.

Mrs. Dvorak had been employed by the Hoover Ball Bearing Co. and had acted as housekeeper for the Manchester and Chelsea Catholic priests for many years. She was a member of St. Mary Catholic church, the St. Mary Altar Society, the American Legion Auxiliary, the Gold Star Mothers, and the VFW Auxiliary.

She is survived by one son, John Dvorak, of Chelsea; one sister, Mrs. Edwin Kusch of Chelsea; three grandchildren and two great-grandchildren. One son, Robert, died in service in the Philippines during World War II.

Funeral services were held at 10 a.m. Saturday, Aug. 28 in St. Mary Catholic church with the Rev. Fr. Francis Wahowiak officiating. Burial followed in Mt. Olivet Cemetery. The Rosary was recited at 8 p.m. Friday at the Staffan Funeral Home.

Thursday evening dinner guests of Mr. and Mrs. Prentiss Davis, 2038 M-52, were their daughter, Sharon E. Davis of Jackson, and the Rev. and Mrs. Donald G. Foote.

Mrs. Frederick Leas

Retired Chrysler Employee Dies After Long Illness

Mrs. Frederick (Rose M.) Leas, 66, who had made her home with a sister-in-law, Mrs. Genevieve DeSmith of 1183 Sugar Loaf Lake, Lyndon township, died there on Thursday, Aug. 26 after a long illness. She had formerly lived in Detroit.

Born Sept. 19, 1904 in Damascus, Syria, she was a daughter of Samuel and Mary Shaar Harook. She came to the United States in 1916, and had been employed by Chrysler Corp. for more than 45 years, retiring in 1964. She married Frederick Leas June 29, 1940. He died March 6, 1956.

In addition to her sister-in-law, Mrs. DeSmith, she is survived by three nephews, Samuel Harook, of St. Clair Shores, and Edward and John Harook, both of Chelsea, as well as a niece, Agnes Harook Miller of Troy, and an aunt, Mrs. Mary Shaar of Detroit. She was preceded in death by a brother, Mitchell Harook and a sister, Beulah.

Funeral services were held at 10 a.m. Monday, Aug. 30 at the Burghardt Funeral Home with the Rev. Warner H. Siebert officiating. Burial followed in Oak Grove Cemetery.

SCHOOL LUNCH MENU

Week of Sept. 8-10

Wednesday, Sept. 8—Prono burgers, buns, trimmings, buttered corn, potato tots, catsup, pudding, cookie, milk.

Thursday, Sept. 9—Savory beef, whipped potatoes, buttered green beans, home-made bread, Jell-O with fruit, milk.

Friday, Sept. 10—Fish-wiches on buns, tartar sauce, cole slaw, potato chips, cake, fruit, milk.

Tractor Pulls...

(Continued from page one)

The tractor pull were, by class:

Up to 4,000 lbs.: Lloyd Grau, Chelsea, 1st, 184 percent, \$25; Dave Schaible, Manchester, 2nd, \$15; Roy Weidmayer, Manchester, 3rd, \$10; Doug Englebert, Manchester, 4th, \$5.

4,001-6,000 lbs.: John Majzel, Owosso, 1st, 197 percent, \$25; Jen Kalizek, Owosso, 2nd, \$15; Jen Heiber, Manchester, 3rd, \$10; Ken Lindeman, Saline, 4th, \$5.

6,001-9,000 lbs.: Bill Spike, Owosso, 1st, 220 percent, \$50; Rich Van Horn, Saline, 2nd, \$40; Harold Haussler, Manchester, 3rd, \$30; Rich Schaible, Manchester, 4th, \$20.

9,001 lbs and over: Doug Englebert, Manchester, 1st, 187 percent, \$50; Dennis Trinkle, Dexter, 2nd, \$40; LeRoy Buss, Chelsea, 3rd, \$30; Bill Lindeman, Saline, 4th, \$20.



A SONG SHALL RISE: "Make a Joyful Noise" was the theme of the third-place winning float in the Youth Division of the Fair Parade entered by the St. Paul Youth Fellowship. The fellow in front of the float is a member of the Zal Gaz Grotto Club clowns.



RESERVE CHAMPION LAMB: Matt Grau, right, shows his reserve champion lamb purchased by Manchester Food Locker for 70 cents per pound. The lamb weighed 107 pounds.

Three CHS Grads Are U-M Regents Alumni Scholars

Outstanding Michigan high school graduates who will be freshmen at the University of Michigan have been designated as Regents-Alumni Scholars, the University announced.

From the Chelsea area, Regents-Alumni Scholars include Susan Rasmussen, Susan Stock and Patricia Ann Young.

The honor recognized the scholars' superior academic achievement and their potential contribution to the scholarly community of the U-M.

Finalists are selected from among all application for freshman admission and are referred to local U-M alumni for interviews and recommendations.

Finalists are selected from among a certificate and a \$50 honorarium. Financial need is not a consideration in the selection.

School Opening...

(Continued from page one)

The hot lunch program will begin on the opening day of school, Sept. 8. Student lunches will cost 35 cents and adult lunches will cost 50 cents. One-half pint of milk is included in the price of the lunch, and additional milk is available at a cost of 3 cents a half pint for students and 7 cents for adults.

Mrs. Duane Weiss, dietitian for the school district, will once again make her menus available to The Standard, so students may have a weekly preview of what's to come. Mills also said that there is no book shortage this year, and that all books will be supplied by the school district as required by law.

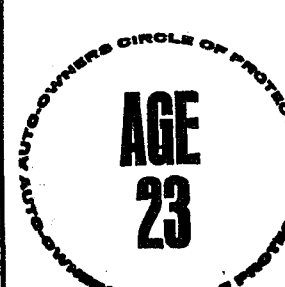
Grid Practice...

(Continued from page one)

Chelsea's first scheduled contact will be Sept. 10 with a four-way scrimmage with Michigan Center, Tecumseh and Brighton, at Michigan Center.

The varsity football schedule this year is:

Sept. 17—Stockbridge	home
Sept. 24—Dexter	away
Oct. 1—Saline	home
Oct. 8—Lincoln	away
Oct. 15—Novi	away
Oct. 22—Dundee	home
Oct. 29—South Lyon	away
Nov. 5—Milan	home
Nov. 12—Jackson N.W.	away



Married Male Driver

Your A-O man will save you money on your car insurance. No surcharge or higher rate. See your A-O man—he's all out for you.

A. D. MAYER AGENCY, INC.

"Your Protection Is Our Business"

Phone 479-5061

115 Park St. Chelsea

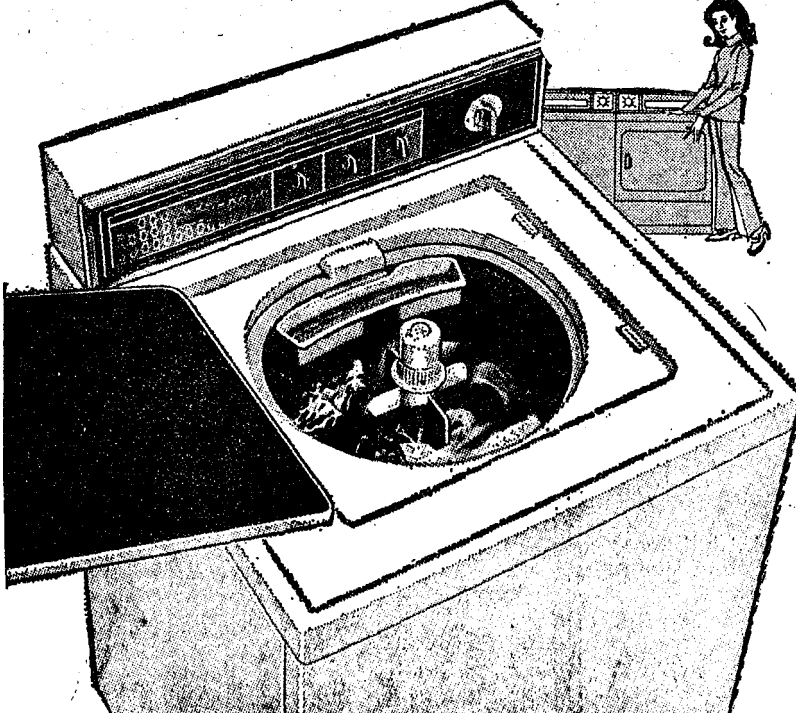
Auto-Owners

INSURANCE COMPANY

Home office at Lansing, Michigan

GAMBLES

14 BIG REASONS WHY CORONADO LAUNDRY TWINS ARE YOUR BEST BUY!

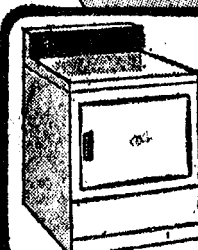


WASHER

1. Giant 18-lb. washing tub
2. 5-way washing action
3. Automatic Coodown rinse
4. 8-vane polyethylene agitator
5. Heavy duty 1/2 HP motor
6. Instant braking safety spin
7. Backed by Coronado warranty!

DRYER

1. Largest drum made—8 cu. ft.
2. Automatic 10-minute Coodown
3. Safety door shutoff
4. Large lint screen
5. Fast, gentle, even drying
6. 480 turbulent air Jet Ports
7. Backed by Coronado warranty!



Enzyme soak cycle! Special care for permanent press! Giant 18-lb. capacity! Four cycles handle any wash load. Automatic Coodown rinse reduces wrinkling. Infinite water level control, recirculating lint filter.

Automatic Washer \$219⁹⁵
Electric Dryer \$164.95
Gas Dryer \$184.95

ALWAYS BETTER BUYS AT GAMBLES

Open 8:00 a.m. to 5:30 p.m. Daily
8:00 a.m. to 9:00 p.m. Friday
110 N. Main Phone 475-7472

FALL IS NEAR — Got Your Homework DONE?



GUTTERS

HANDSOME BOX - STYLE	
5" GIRTH - DO IT YOURSELF	
10' Length, white	\$2.98
10' Length, galvanized	\$1.98
(DOWNSPOUTS SAME PRICE AS GUTTER)	
ELLS	WHITE .59 GALV. .45
END CAPS	.29 .25
JOINTS	.55 .45

16" and 24" Wide

FOIL-BACK FIBERGLASS FOR TOP FUEL SAVINGS

2 3/4" Thick	.057 Sq. Ft.
3 1/2" Full-Wall	.017 Sq. Ft.

MICA-PELLETS

POUR-TYPE ATTIC FILL	\$1.35
3 cu. ft. bag	

MARINE TYPE FOR LONGER LIFE

39¢

CARTRIDGE Others from 29¢

CAULKING GUN 99¢

DOOR & WINDOW SEAL

SELF-STIK FOAM RUBBER, 10 ft. 79¢

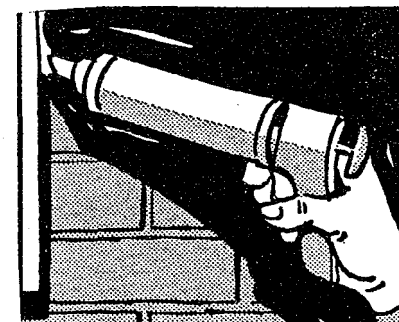
HEAVY DUTY SEALTABS

WIND WON'T HARM A SEALTAB ROOF

—DUSKY OLIVE	—FROSTED GRAY
—WHITE	—CHAPEL BLUE
—BLACK	—FROSTED BLUE
—FROSTED GREEN	—FROSTED RED

\$10⁹⁵ PER SQUARE

INSULATION



CAULKING



ROOFING

ALL PRICES SHOWN ARE CASH-N-CARRY — FREE DELIVERY OVER \$100.00!

CHELSEA LUMBER

"Where the Home Begins"

MON. - FRI. 'TIL 5:30

SAT. 'TIL 3:30

THE SUPERMARKET THAT'S JUST A LITTLE BIT BETTER

Stop & Shop

14901 Old U.S.-12
Corner at M-52
Chelsea



THE KNOW HOW OF INTELLIGENT MEAT BUYING IS REALLY 'KNOW WHERE'

Our customers have learned to depend on the outstanding quality of Stop & Shop meats — unfailing satisfaction with every cut they purchase. The finest quality, together with the experienced expertise of our meat cutting experts, makes an unbeatable combination!

Prices Effective Thursday, September 2, 1971,
through Monday, September 6, 1971.

Barbecuing for Labor Day? We got the Fixins!

U.S.D.A. GRADE 'A' YOUNG! TENDER! WHOLE

FRYING CHICKENS

Young!
Farm
Fresh!

29^c lb.

U.S.D.A. Grade A
Frying Chickens... **39^c lb.**

U.S.D.A. Grade 'A' Fresh Frying
Chicken Breasts... **49^c lb.**

U.S.D.A. Grade 'A' Fresh Frying
Chicken Legs... **49^c lb.**

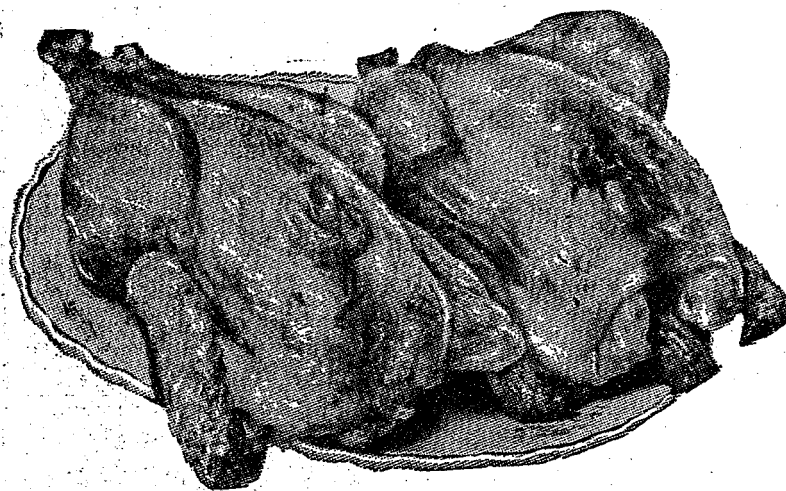
Hygrade's Ball Park
Franks... **89^c**

Cut from Young Corn-Fed Porkers!
Top Quality! Fresh

PORK ROASTS

Boston Butt **59^c lb.**

"Trimmed-Rite" Practically Boneless! Fresh
PORK STEAKS
Quick To Fix! **69^c lb.**



Top Quality! "Trimmed-Rite" Fresh Boneless
Pork Roasts... **69^c lb.**

Top Quality! "Trimmed-Rite" Fresh Boneless
Pork Cutlets... **69^c**

Peschke's Cry-O-Vac Thin
Sliced Bacon... **79^c lb.**

Peschke's All Meat!
Sliced Bologna... **59^c**

WE
RESERVE
THE
RIGHT
TO
LIMIT
QUANTITIES

For Your
Convenience
**OPEN
SUNDAY**
10 a.m. - 5 p.m.
All Sale Prices
Effective
Sundays

Sorry,
No Sales
To Dealers

STORE HOURS:
MONDAY, SEPT. 6,
LABOR DAY,
10 a.m. to 3 p.m.
TUESDAY
thru
SATURDAY
9 a.m. to 9 p.m.
SUNDAY
10 a.m. to 5 p.m.

McDONALD LOW FAT

MILK... gal. 69^c

McDONALD SMALL OR LARGE CURD

COTTAGE CHEESE
1-Lb. Crtn. **2 for 49^c**

PEPSI-COLA

10-Oz. No-Return
Bottles **8 pac 89^c**

REFRESHING MEADOWDALE

POP... Assorted Flavors 9^c

Courteous, Friendly Service

For Your Shopping Convenience...

**OUR NEW
SUMMER HOURS**

Monday thru Saturday

9 a.m. to 9 p.m.

Sunday, 10 a.m. to 5 p.m.

Plenty of FREE PARKING

LIBBY'S

TOMATO CATSUP

14-Oz. Bottle **89^c**

PILLSBURY WHITE, FUDGE, YELLOW

CAKE MIXES
1-Lb., 2 1/2-Oz. Box **22^c**

MICHIGAN

POTATOES

10-Lb. Bag **39^c**

**ICE COLD
BEER & WINE**

Farm Fresh Produce

California Vine-Ripened		
CANTALOUPE	27 Size	33^c
Washington State		
BARTLETT PEARS	Lb.	19^c
Home-Grown		
PEPPERS	Ea.	9^c
Home-Grown		
CUCUMBERS	Ea.	9^c
Home-Grown		
TOMATOES	Lb.	25^c

MICHIGAN

LETTUCE... Head 15^c

McDONALD PREMIUM

ICE CREAM
1/2 gal. **79^c**

CRISPY FLAKE

POTATO CHIPS

13-Oz. Can **44^c**

MEADOWDALE FRESH FROZEN SLICED

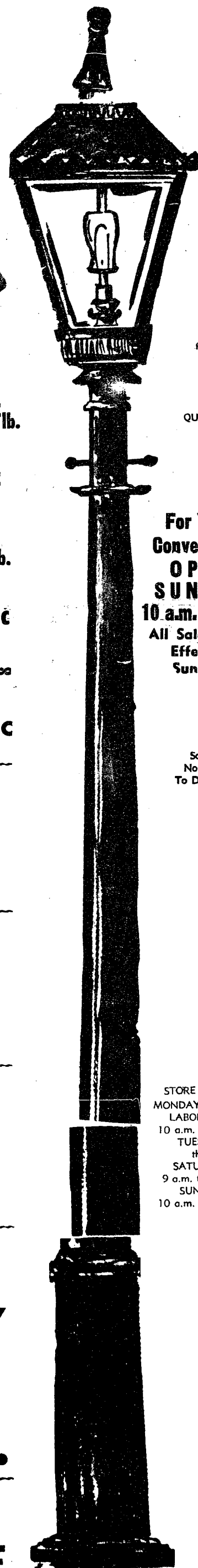
STRAWBERRIES
10-Oz. Pkg. **19^c**

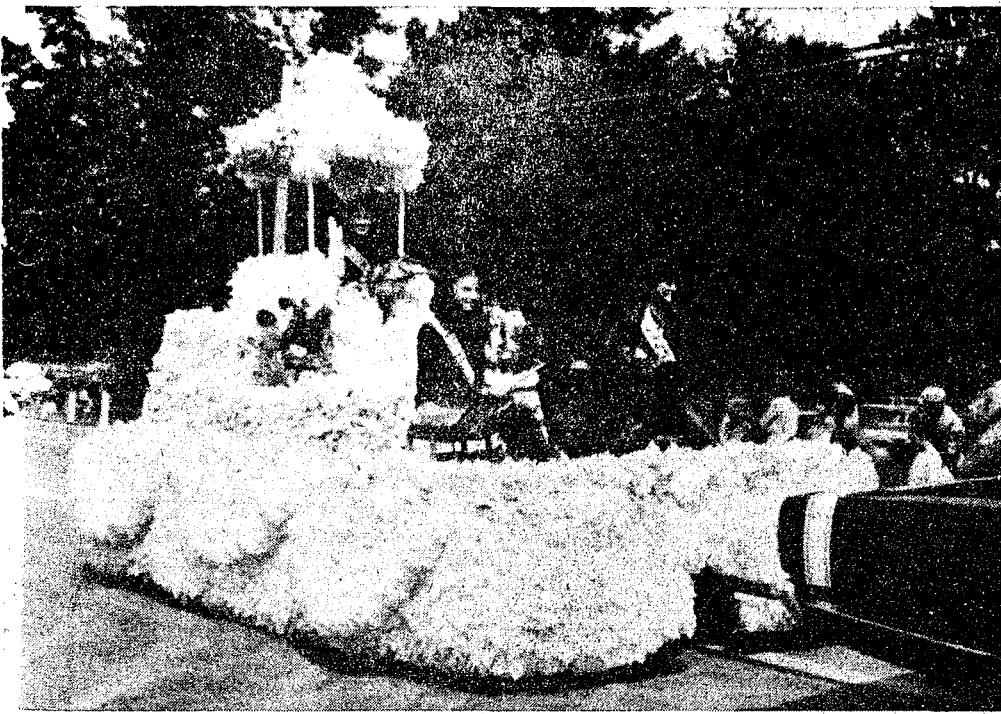
**OPEN
LABOR DAY**

MONDAY, SEPT. 6

10 a.m. to 3 p.m.

**Shop in a pleasantly cool
AIR-CONDITIONED STORE**

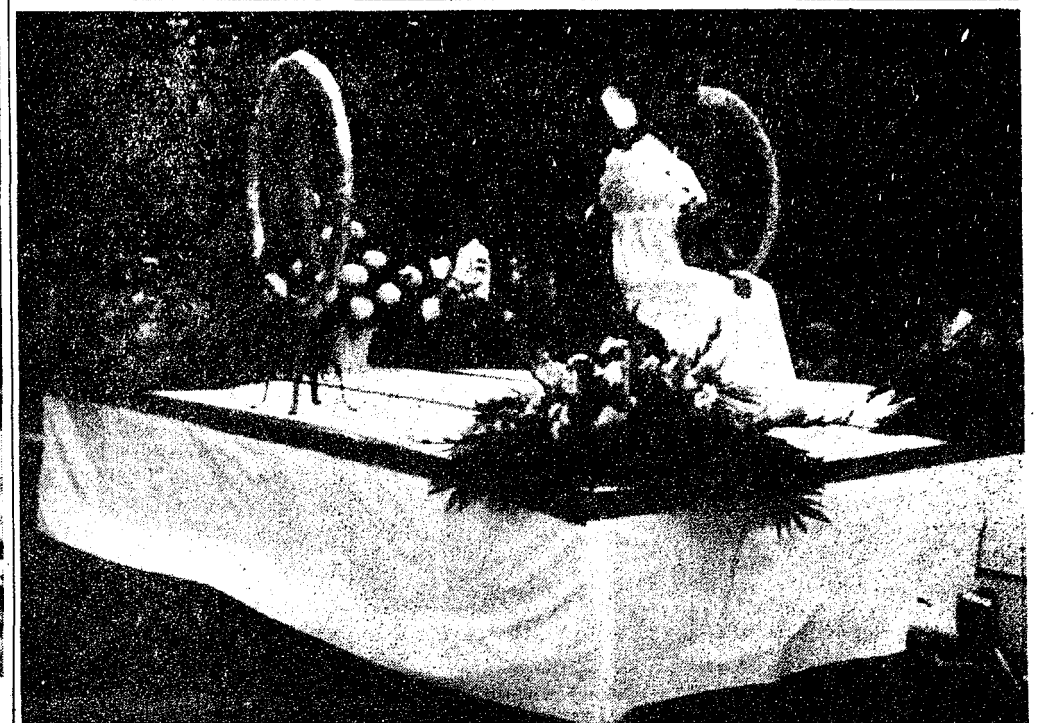




GOOD OLD DAYS: The Chelsea High school Junior class took second-place honors in the Fair Parade's Youth Division with their entry entitled "The Good Old Days." Miss "1860" was Junior Class Queen candidate Janice Bauer, runner-up in the Queen Contest.



REAL COUNTRY: "Good Old Country Comfort," parade entry of the Senior class, took fourth-place honors in the Youth Division of Saturday's street parade. Senior class queen candidate and 1971 Fair Queen Cathy Clark holds a well behaved piglet.



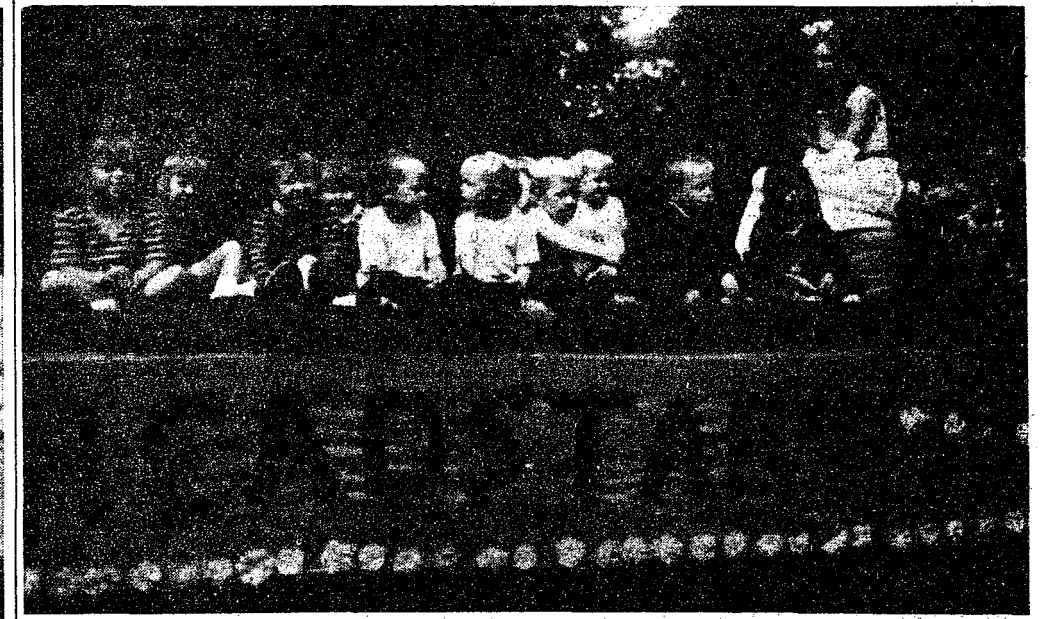
PEACE: Second-place float in the Adult Division was the Kiwanis Club entry featuring two large peace signs. The float was graced by Kiwanis Club Queen candidate Mary Beth Dettling.



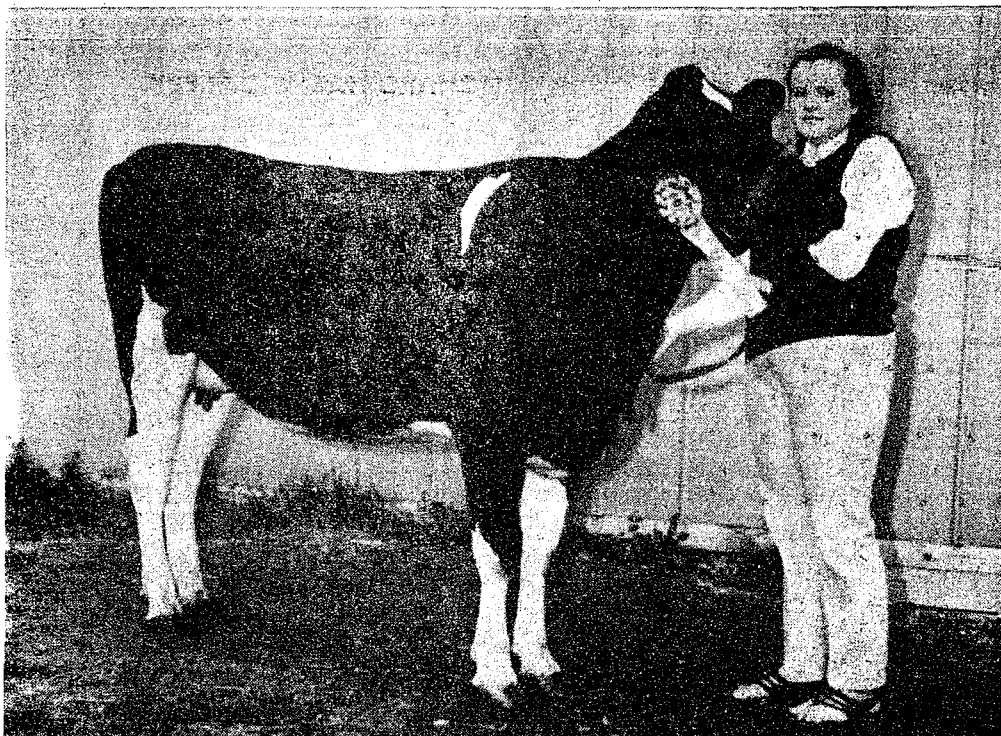
PROMENADE ALL: Stockbridge Squares, noted for their square dancing expertise proved also to be adept at float building. They captured third place in the Adult Division of the Fair Parade with their float, "Square Dancing Around the World."



PARADE MARSHAL: Parade watchers along the entire length of Saturday's Mammoth Street Parade route were welcomed by a warm smile and big wave from 1971 Parade Marshal Anton Nielsen, a long-time member of the Chelsea Community Fair's Board of Directors.



FOURTH-PLACE WINNER in the Adult Division of the Saturday street parade was the Headstart float prepared by the Henry Harat family. Riding on the float were Headstart children and Headstart Queen Ann Nyies.



GRAND CHAMPION HEIFER: Debbie Murdoch, daughter of Mr. and Mrs. Warren Murdoch, displays her 2-year-old registered Holstein heifer, the Junior Division grand champion winner in the dairy show at the Chelsea Community Fair. Debbie, who also won first place in the Dairy Showmanship competition, started raising the heifer as a 4-H project calf.

Grass Lake Youth Arrested Here on Marijuana Charge

A juvenile from Grass Lake was arrested by Chelsea Police in Pierce Park Sunday, Aug. 29 at 10:05 p.m. on a charge of possession of marijuana.

Patrolman L. F. Schneider, responding to a complaint about obscene language and other disturbing behavior in the park, discovered the juvenile and three other youths near the merry-go-round.

A search of the youth produced a plastic bag containing what appeared to be marijuana. The other youths were not implicated, and were not detained.

The juvenile was taken to police headquarters where a field test performed by Chelsea Police tentatively identified the substance in the bag as being marijuana. The juvenile was released to the custody of his parents.

Pending verification by the State Police Crime Lab in Plymouth of the contents of the bag, Chelsea police intend to petition juvenile court for a hearing on the matter.

Inverness Golf League

	Pts.
J & S Tool Co.	61
Chelsea Milling	59½
Central Fibre	54
Lardas & Ahlstrom	53
Seitz's Tavern	52½
Inverness Inn	49½
L. P. S.	48½
G & A Sales	45½
Chelsea Lanes	45
Meabons	44
Chelsea Lumber	42
A. D. Mayer Ins.	41½
The Keglers	39
Schumm's	38
The Pub	36½
Dancer's	35½
Dana Corp.	34½
Fitzsimmons Exe.	30½

WANTED CEMENT & BLOCKWORK

All types—Poured walls, floors, drives and foundations.

CECIL CAUDILL

(517) 851-3847

Attention Bowlers!

Fall Bowling League Round-Up! WOMEN BOWLERS "WANTED"

★ **LEISURE TIME WOMEN'S LEAGUE**
Bowls Tues. Afternoon, 1 p.m. Starts Sept. 14.

MEN & WOMEN "WANTED"

★ **HI-POINT MIXED LEAGUE**
Bowls Tues. Nights, 6:30 p.m. Starts Sept. 7.
This league has both women's and mixed teams.

★ **SUNDAY SWINGERS LEAGUE**
Bowls every other Sunday night, 8 p.m. Starts Sept. 12.

★ **GUYS & GALS LEAGUE**
Bowls Thurs. Nights, 9 p.m. Starts Sept. 9.

YOUTH BOWLING LEAGUES Starting Saturday, Sept. 11, 1971

PREP DIVISION, 9:00 a.m.—7 to 9 years of age who have not reached their 10th birthday as of Aug. 1, 1971.

PEANUT DIVISION, 11:30 a.m.—10-12 years of age who have not reached their 13th birthday as of Aug. 1, 1971.

JUNIOR-MAJOR DIVISION, 2:00 p.m.—13 to 18 years of age.

CHELSEA LANES

1180 M-52

Phone 475-8141

Assembly of God - Michigan District

Presents

"BROTHER BOB" HARRINGTON

The Chaplain of Bourbon St.

MONDAY, SEPT. 6

LABOR DAY RALLY

FA-HO-LO PARK

Mt. Hope Rd., Just South of I-94, Grass Lake

First Assembly of God of Chelsea

T. B. THODESON, PASTOR

HOUSE HUNTING! FIND IT. WE'LL FINANCE IT!

Ann Arbor Federal Savings has about \$100,000 a day for home financing. The mortgage specialists at the "FED" believe that this is a good time to buy or build. Terms are the best in years and with increasing construction costs, you'll save money by buying now. The mortgage you get today is an important part of your future. Be sure you get the best available from the Ann Arbor "FED."

AAFS

the savings and loan specialists

Liberty at Division, West Stadium at Pauline,
Huron Parkway at Platt, Plymouth at Nixon.
ANN ARBOR FEDERAL SAVINGS

Member: Federal Home Loan Bank System • Federal Savings and Loan Insurance Corporation

Fair Premium Awards

Livestock . . .

DAIRY CATTLE—

Holstein: Mature Cow—John Kozminski, 1st, \$7.50; Gordon McCalla, 2nd, \$6; Robert Herrst, 3rd, \$4.50. Three-year-old—Arthur Sias, 1st, \$6.50; Jeff Krull, 2nd, \$5; Two-year-old—Joan Ottoman, 1st, \$6; Debbie Murdoch, 2nd, \$5. Senior Yearling Heifer—Debbie Murdoch, 1st, \$8; Gordon McCalla, 2nd, \$4.50; Cindy Van Riper, 3rd, \$3. Junior Yearling—Arthur Sias, 1st, \$4.50; Karen Ottoman, 2nd, \$3; John Kozminski, 3rd, \$1.50. Senior Calf—Gordon McCalla, 1st, \$4.50; Debbie Murdoch, 2nd, \$3; Steve Grau, 3rd, \$1.50. Junior Calf—Matt Grau, 1st, \$4.50; Nancy Heller, 2nd, \$3; Beth Heller, 3rd, \$1.50.

SWINE—

Market Hogs: Market Barrow—Karen Baldus, 1st, \$4.50; Gordon McCalla, 2nd, \$3; Mary Ann McCalla, 3rd, \$1.50. Pen of Three—Gordon McCalla, 1st, \$4.50; Karen Baldus, 2nd, \$3; Kathy McCalla, 3rd, \$1.50. Yorkshires: Gilt, 3-6 mos.—Kathy McCalla, 1st, \$4.50; Ken McCalla, 2nd, \$3; Tom Donkin, 3rd, \$1.50. Gilt, 6-12 mos.—Ken McCalla, 1st, \$4.50; Kathy McCalla, 2nd, \$3. Pen of 3 Gilts, 6-12 mos.—Ken McCalla, 1st, \$4.50; Kathy McCalla, 2nd, \$3.

Chester Whites: Gilt, 6-12 mos.—Jim Bauer, 1st, \$4.50; Kirk Fiegel, 2nd, \$3.

Hampshire: Gilt, 6-12 mos.—Dan Baldus, 1st, \$4.50.

All Other Breeds: Boar, 6-12 mos.—Duane Fiegel, 1st, \$4.50. Gilt, 6-12 mos.—Duane Fiegel, 1st, \$4.50.

BEEF CATTLE—

Breeding Beef: Beef Calf—Dan Grau, 1st, \$6. Beef Heifer—Art Sias, 1st, \$6. Beef Cow—Roy Radtke, 1st, \$6.

Market Stock: Beef Steer—Du-

ane Bycraft, 1st, \$6. Steer Club, light—John Renz, 1st, \$6; David Lesser, 2nd, \$4.50; David Trinkle, 3rd, \$3. Steer Club, heavy—Karen Trinkle, 1st, \$6; Duane Bycraft, 2nd, \$4.50; Debbie Gross, 3rd, \$3.

SHEEP—
Market: Pen of Three—Tim Grau, 1st, \$4.50; Lisa Schairer, 2nd, \$3; Mike Bristle, 3rd, \$1.50. Single Fat Lamb—Daniel Grau, 1st, \$3; Matt Grau, 2nd, \$1.50; Steven Grau, 3rd, 75 cents.

Corriedale—Ewe Lamb—Lori Bycraft, 1st, \$3; Diane Bycraft, 2nd, \$1.50. Yearling Ewe—Diane Bycraft, 1st, \$3; Mark Lesser, 2nd, \$1.50. Aged Ewe—Mark Lesser, 1st, \$3; Diane Bycraft, 1st, \$3.

Hampshire: Ewe Lamb—Tim Grau, 1st, \$3; Lisa Schairer, 2nd, \$1.50; Mark Schairer, 3rd, 75 cents. Ram Lamb—Mark Schairer, 1st, \$3; Tim Grau, 2nd, \$1.50; Lisa Schairer, 3rd, 75 cents. Yearling or Aged Ram—Tim Grau, 1st, \$3. Shropshire: Ewe Lamb—Pat O'Doherty, 3rd, 75 cents. Yearling Ewe—Randy Hillman, 1st, \$3.

Other Breeds: Ewe Lamb—Charles Buxton, 1st, \$3. Ram Lamb—Charles Buxton, 1st, \$3; Randy Hillman, 2nd, \$1.50; Larry Johnson, 3rd, 75 cents.

Sheep Wool: Medium Ram Fleeced—Diane Bycraft, 1st, \$3. Medium Ewe Fleeced—Lori Bycraft, 1st, \$3; Fatty Nickel, 2nd, \$1.50; Melanie Lee, 3rd, 75 cents. Nanny Goat—Karen Trinkle, 1st, \$3. Kid Goat—David Trinkle, 1st, \$3.

POULTRY—

Light Breeds: White Leghorns—Tom Ball, 1st, \$1.50; Paul Scherd, 2nd, \$1; Other Light Breeds—Scott Powers, 1st, \$1.50. Fancy Light—Robert Douglas, 1st, \$1.50; Doris Erke, 2nd, \$1; Robert Douglas, 3rd, 75 cents.

Heavy Breeds: White Rocks—Paul Scherd, 1st, \$1.50; Mary Vercheran, 2nd, \$1; Debbie Ziegler, 3rd, 75 cents. Barred Rocks—Ethel Haist, 1st, \$1.50; Reanne Drouare, 2nd, \$1; Rhode Island Reds

—Douglas Sindlinger, 1st, \$1.50. New Hampshire Reds—Rita Drouare, 1st, \$1.50. Other Heavy Breeds, A—Thomas Pleuss, 1st, \$1.50; Thomas Pleuss, 2nd, \$1; Robert Douglas, 3rd, 75 cents. Other Heavy Breeds, B—Thomas Pleuss, 1st, \$1.50; Thomas Pleuss, 2nd, \$1; Paul Scherd, 3rd, 75 cents. Meat Pen—Mark Stapish, 1st, \$1.50; Mary Erke, 2nd, \$1; Ethel Haist, 3rd, 75 cents.

Ducks: White Pekins—Matt Stapish, 1st, \$1.50; Tom Ball, 2nd, \$1; David Schuelke, 3rd, 75 cents. Tame Mallard—Alice Erke, 1st, \$1.50; Scott Power, 2nd, \$1; Muscovy—Rebecca Dawson, 1st, \$1.50. Other Ducks—Tom Ball, 1st, \$1.50; Butch Gross, 2nd, \$1; Theresa Bassett, 3rd, 75 cents.

Geese: Old Pair—Douglas Sindlinger, 1st, \$1.50; Gary Haas, 2nd, \$1; Tom Ball, 3rd, 75 cents. Young Pair—Scott Powers, 1st, \$1.50.

Turkeys: Old Pair—Douglas Sindlinger, 1st, \$1.50.

Bantams: Old Pair—Mrs. Tom Dehn, 1st, \$1; Douglas Sindlinger, 2nd, 75 cents; Young Pair—Douglas Sindlinger, 1st, \$1; Mark Stapish, 3rd, 50 cents. Fancy Old Pair—Larry Johnson, 1st, \$1; Larry Johnson, 2nd, 75 cents; Robert Douglas, 3rd, 50 cents. Fancy Young Pair—Larry Johnson, 1st, \$1; Larry Johnson, 2nd, 75 cents; Larry Johnson, 3rd, 50 cents.

Pigeons: Kings—Jon Passow, 1st, \$1; Eileen Stapish, 2nd, 75 cents. Fan Tails—Eileen Stapish, 1st, \$1. Rollers—Jon Passow, 1st, \$1; Others—L. McCalla, 1st, \$1; Larry Johnson, 2nd, 75 cents; L. McCalla, 3rd, 50 cents.

Fancy Light Breeds: See, A, Class 3A-4—Rochelle Drouare, 1st, \$1.50; Rita Drouare, 2nd, \$1. Class 3A-2—David Schuelke, 1st, \$1.50; Mark Stapish, 2nd, \$1. Class 3A-3—Gail Erke, 1st, \$1.50; Thomas Pleuss, 2nd, \$1; Section F, Class 3-A—Robert Douglas, 1st, \$1.50; Robert Douglas, 2nd, \$1. Class 4-A—Gail Erke, 1st, \$1.50; Doris Erke, 2nd, \$1; Alice Erke, 3rd, 75 cents. Mark Stapish, 1st, \$1.50.

Ag. Exhibits . . .

FAIR CROPS—

Corn: Hybrid—Reanne Drouare, 1st, \$3; Matt Grau, 2nd, \$2; Douglas Drouare, 3rd, \$1. Stalk—Ryan Sweeney, 1st, \$1.50; Kevin Bradbury, 2nd, \$1; Neil Bollinger, 3rd, 50 cents.

Peck Display: Oats—Daniel Grau, 1st, \$1; Howard Sias, 2nd, 75 cents; John McGuire, 3rd, 50 cents. Wheat—Gary Eschelbach, 1st, \$1; Rod Sweeney, 2nd, 75 cents. Legumes and grasses: Legume Seed Display—Gary Eschelbach, 1st, \$1; Dale Koch, 2nd, 75 cents. Potatoes: Early Peck—Martin Ruhlig, 1st, \$1. Late plate Gary Eschelbach, 1st, \$1; Kay Eschelbach, 2nd, 75 cents; Wendy Wolfgang, 3rd, 50 cents. Early Plate—Ron Stoffer, 1st, \$1; Beth Heller, 2nd, 75 cents. Potato Display—Ron Stoffer, 1st, \$1; Jim Marshall, 2nd, 75 cents; Scott Otto, 3rd, 50 cents.

Others: Soy Beans—Steve Grau, 1st, \$1. Sweet Corn—Jim Marshall, 1st, \$1; Danny Ruhlig, 2nd, 75 cents; Jr. Miller, 3rd, 50 cents.

FRUIT—
Apples: Apple Display—L. McCalla, 1st, \$2. Plate, Yellow Transparent Apples—L. McCalla, 1st, 50 cents. Delicious Apples—L. McCalla, 1st, 50 cents. Crab Apples—L. McCalla, 1st, 50 cents. Steel Red—L. McCalla, 1st, 50c.

Others: Peaches—L. McCalla, 1st, \$1.50; Myrtle Robbins, 2nd, \$1. Pear—L. McCalla, 1st, \$1.50; Gary Eschelbach, 2nd, \$1; Wendy Wolfgang, 3rd, 50 cents. Plums—L. McCalla, 1st, \$1.50. Best Plate Grapes—Katheren Seitz, 1st, \$1; Emma Seitz, 2nd, 75 cents.

VEGETABLES—
Garden Vegetables: Display Vegetables—Hazel Gross, 1st, \$2; Tom Forshee, 2nd, \$1; Ethel Knickerbocker, 3rd, 75 cents. Red Cabbage—Martin Ruhlig, 1st, \$1. White cabbage—Myrtle Robbins, 1st, \$1; Nancy Ruhlig, 2nd, 75 cents; Sam Trachet, 3rd, 50 cents. Red Tomatoes—Amelia Hess, 1st, \$1; Emma Seitz, 2nd, 75 cents; Amelia Bohne, 3rd, 50 cents. Yellow Tomatoes—Amelia Hess, 1st, \$1. Novelty Tomatoes—Arlene Grau, 1st,

\$1; Martha Eisman, 2nd, 75 cents; Laurie Heller, 3rd, 50 cents. Pie Pumpkins—Dan Blough, 1st, \$1; Steve Blough, 2nd, 75 cents; Tim Blough, 3rd, 50 cents. Other Pumpkins—Ron Stoffer, 1st, \$1; Blough boys, 2nd, 75 cents; Diane Luick, 3rd, 50 cents.

Buttercup Squash: Gary Eschelbach, 1st, \$1. Butternut Squash: Amelia Bohne, 1st, \$1; Dan nny Blough, 2nd, 75 cents; Barb Troitz, 3rd, 50 cents. Pepper Squash: Dan Blough, 1st, \$1; Pam Stoffer, 2nd, 75 cents; Amy Wolfgang, 3rd, 50 cents. Any other Squash: Ron Stoffer, 1st, \$1; Amelia Bohne, 2nd, 75 cents; Pam Stoffer, 3rd, 50 cents.

Watermelon: Duane Luick, 1st, \$1; Vernon Otto, 2nd, 75 cents. Muskmelon: John Dvorak, 1st, \$1; Bobby Riemenschneider, 2nd, 75 cents; L. McCalla, 3rd, 50 cents. Green Onions and Onions: Jeff Troitz, 1st, \$1; Sue Riemenschneider, 2nd, 75 cents; Diane Ruhlig, 3rd, 50 cents. Red Peppers: Myrtle Robbins, 1st, \$1.

Green Peppers: Danny Ruhlig, 1st, \$1; Arlene Grau, 2nd, 75 cents; Emma Seitz, 3rd, 50 cents. Cukes, pickle & slicing: Amy Wolfgang, 1st, \$1; Amelia Hess, 2nd, 75 cents; Denise Wirtz, 3rd, 50 cents. Carrots: Byron Smith, 1st, \$1; Douglas Drouare, 2nd, 75 cents; Amelia Hess, 3rd, 50 cents. Egg Plant: Sam Trachet, 1st, \$1; Myrtle Robbins, 2nd, 75 cents; Rita Drouare, 3rd, 50 cents.

Beets: Amelia Hess, 1st, \$1; Lance Worden, 2nd, 75 cents; Kevin Koch, 3rd, 50 cents. Radishes: Douglas Eder, 1st, \$1. Green String Beans: Jim Marshall, 1st, \$1; Todd Otto, 2nd, 75 cents; Troy Otto, 3rd, 50 cents. Kohlrabi: Reanne Drouare, 1st, \$1; Elizabeth Drouare, 2nd, 75 cents; Debbie Gross, 3rd, 50 cents.

MISCELLANEOUS—
Unusuals: Eggs—Amy Wolfgang, 1st, \$1; June Sias, 2nd, 75 cents; Arlene Grau, 3rd, 50 cents. Nuts, Walnut and Hickory—Ryan Sweeney, 1st, \$1; Randy Sweeney, 2nd, 75 cents; Elizabeth Drouare, 3rd, 50 cents. Largest Squash—Barb Troitz, 1st, \$1; Douglas Drouare, 2nd, 75 cents. Largest Pumpkin—Sam Trachet, 1st, \$1; Martha Eisman, 2nd, 75 cents.

Most Unusual Crop: Mildred Sourbeck, 1st, \$2; Scott Otto, 2nd, \$1; Mark Juergens, 3rd, 75 cents. Sunflower: Scott Otto, 1st, \$1; David Rook, 2nd, 75 cents; Babe Ruhlig, 3rd, 50 cents.

Novelty Display: Rita Drouare, 1st, \$2; Larry Johnson, 2nd, \$1; Craig Wirtz, 3rd, 50 cents.

Rabbits . . .

Over 10 lbs.: Senior Buck: Mark Stapish, 1st, \$1; Larry Johnson, 2nd, 75 cents; Elizabeth Herrst, 3rd, 50 cents. Senior Doe: Leslie Hurd, 1st, \$1; Rochelle Drouare, 2nd, 75 cents; Shelly Hatt, 3rd, 50 cents. Intermediate Buck: Howard Sias, 1st, \$1; Amy Wolfgang, 2nd, 75 cents; Reanne Drouare, 3rd, 50 cents. Intermediate Doe: Larry Johnson, 1st, \$1; Larry Johnson, 2nd, 75 cents; Willard Ziegler, 3rd, 50 cents. Junior Buck: Nancy Heller, 1st, \$1. Junior Doe: Mark Stapish, 1st, \$1; Rita Drouare, 2nd, 75 cents.

are, 2nd, 75 cents; Shelly Hatt, 3rd, 50 cents.
Under 10 lbs.: Junior Buck: Rita Drouare, 1st, \$1. Junior Doe: Susan Heller, 1st, \$1; Cheryl Baris, 2nd, 75 cents.

Horses and Ponies . . .

HORSES—

Halter: Suckling Colts—Jim Sexton, 1st, \$6; Chuck Haas, 2nd, \$4.50; Angella Snyder, 3rd, \$3. Yearling Colt—Jim Sexton, 1st, \$6; Chuck Haas, 2nd, \$4.50; Michelle Soeck, 3rd, \$3. Two-Year-Old—Bill Tite, 1st, \$6; Angella Snyder, 2nd, \$4.50. Three-Year-Old—Pam Bristle, 1st, \$6; Jan Sibley, 2nd, \$4.50; Mary Cooper, 3rd, \$3.

Horsemanship: 14 Years and under: Joyce Cooper, 1st, \$6; Diana Zeeb, 2nd, \$4.50; Mike Atkins, 3rd, \$3. 15 and over: Becky Roger, 1st, \$6; Pam Bristle, 3rd, \$3. English: Bill Tite, 1st, \$6; Becky Rogers, 2nd, \$4.50; Patty Carlson, 3rd, \$3.

Pleasure: Western, 14 and under: Joyce Cooper, 1st, \$6; Diane Zeeb, 2nd, \$4.50; Julie Tite, 3rd, \$3. Western, 15 and over: Janet Sibley, 1st, \$6; Carolyn Tanner, 2nd, \$4.50; Pam Bristle, 3rd, \$3. English Pleasure: Linda Carlson, 1st, \$6; Julie Tite, 2nd, \$4.50; Patty Carlson, 3rd, \$3.

PONIES—
Halter: Suckling Colt: Jo Nevill, 1st, \$4.50; Julie Cowell, 2nd, \$3. Yearling Colt—Tom Cowell, 1st, \$4. Two Years and over—Rita Drouare, 1st, \$4.50; Lynne Warden, 2nd, \$3; Jo Nevill, 3rd, \$1.50.

Saddle: Western Pleasure—Rita Drouare, 1st, \$4.50; Tina Annabel, 2nd, \$3; Mary Kay Harr, 3rd, \$1.50.

Flowers . . .

Potted Plants—
African Violets: Rochelle Drouare, 1st, \$2; Elizabeth Drouare, 2nd, \$1.50.



RESERVE CHAMPION PEN: Lisa Schairer, right, gets a little help from her friends in showing her reserve champion lamb to purchaser Joe Merkel (left) of the Wolverine Bar. Helping are Danny Grau, and Mr. and Mrs. Dean Schairer, Lisa's parents. Merkel purchased the three lambs, weighing a total of 260 lbs., for 33 cents per pound.

SING-ALONG MUSIC at INVERNESS INN
NORTH LAKE
Saturday Nights - 9:30 p.m. to 1:30 a.m.
Music By
LEO WARBOY and the Chippewa Cowboys
YOUR FAVORITE SANDWICHES
SHRIMP, CHICKEN & FISH DINNERS
BEER - WINE - LIQUOR
(Continued on page 11)

FEED

FOR PROFIT

BIGGER PORK PRODUCTION FOR YOUR FEED DOLLAR . . .

For thriving sows, fast-growing pigs and fast-gaining hogs, count on our enriched feeds . . . see the results in fatter profits for you.

Farmers' Supply Co.

Phone GR 5-5511

SPECIAL

thru Wednesday, Sept. 8, 1971

BRAZIER BURGER & FRIES

69^c

Home of fine Brazier Foods

Dairy Queen

brazier

901 S. MAIN ST., CHELSEA PHONE 475-2677

TURN YOUR SPARE TIME INTO money

LEARN BASIC OR ADVANCED INCOME TAX PREPARATION FROM

H&R BLOCK

Thousands are earning good money in the growing field of professional income tax service. Enrollment open to men and women of all ages. Job opportunities for qualified graduates. Send for free information and class schedules. HURRY!

Classes Start Sept. 13

304 So. Ashley 761-1280

Please send me free information

☐ Basic Course ☐ Advanced Course

Name _____

Address _____

City _____ State _____ Zip _____

Phone _____

CLIP AND MAIL TODAY

Let us prepare your chicken for a picnic on the last holiday of the summer season.

OPEN

11 a.m. to 10 p.m.

DELICIOUS FRIED CHICKEN

Individual Chicken Dinners
Includes cole slaw, french fries

BUCKET OF CHICKEN

ROOT BEER BY THE GALLON

ALSO: SANDWICH & FOUNTAIN MENU

L. & R. DRIVE-IN

North Territorial and Dexter Townhall Rd.
PHONE 426-8668
(Call ahead and your take-out order will be waiting)

YOU DESERVE BOTH

BIG CASH SAVINGS 2 S&H GREEN STAMPS

Prices Effective Thursday, Sept. 2, 1971, through Sunday, Sept. 5, 1971.

MICHIGAN BRAND DELICATESSEN FOODS

POTATO SALAD 1-Lb. Crtn.

MACARONI SALAD 1-Lb. Crtn.

SOUR CREAM 8-Oz. Crtn.

CHIP DIP 8-Oz. Crtn.

JELL-O 8-Oz. Crtn.

BROOMS

\$1.99

ROBERTS COOKIES

Great for Lunches
Vanilla Wafers, Ginger Snaps, Assorted

14-Oz. Bag

29^c

INTRODUCTORY OFFER!

LITTLE FRISKIES CAT FOOD

Sea Food, Tuna or Giblets and Liver

14-Oz. Can

15^c

ICE GOLD BEER & WINE - LIQUOR

RICK'S MARKET

"Your Spartan Store"

M-52 North of Chelsea Phone 475-2898

Open 8 a.m. to 10 p.m. 7 Days A Week With Everyday Low Discount Prices



SILVER WEDDING ANNIVERSARY: Mr. and Mrs. Roy Adams, 12085 Jackson Rd., celebrated their silver wedding anniversary Tuesday, Aug. 24, and were the guests of honor at an anniversary party held by their children, Aug. 23. Mr. and Mrs. Gary Little, K. I. Sawyer Air Force Base; Mr. and Mrs. Ernest Hinderer, Chelsea, and Tonya, Charles, Tom and Charity Adams hosted a party for their parents. Guests from Ohio, Manchester and the Chelsea area were present. The Adamses were married at the Steenson Evangelical and Reformed church, Sandusky, O., by the Rev. VonGringman.

Marvin Schillers Mark 25th Anniversary

Mr. and Mrs. Marvin Schiller celebrated their 25th wedding anniversary Aug. 31. They were the guests of honor at a surprise silver anniversary party by their daughter, Linda Clement, their niece, Joanne Owens, and Mrs. Schiller's sister, Mrs. Alvin Whittaker at the Chelsea Rod and Gun Club on Tuesday, Aug. 23. Mr. and Mrs. Schiller were married at home of Mr. Schiller's parents, Mr. and Mrs. Elmer Schiller, on Aug. 31, 1946 by the Rev. P. H. Nowinski.

HAVY NEST
A golden eagle builds its nest of twigs up to four feet long and an inch in diameter. A completed nest may weigh a ton.

Magic Mirror Beauty Salon

Open Monday thru Friday
9 a.m. to 9 p.m.
Saturday, 8 a.m. to 3 p.m.

PHONE 665-0816

VILLAGE BEAUTY SALON

LORETTA PANNONE, Owner-Operator
CINDY - EULA - MARGE - ARLENE

107 N. MAIN

PHONE 475-5421

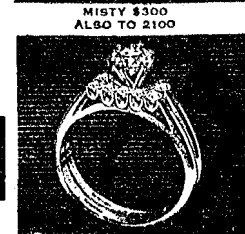
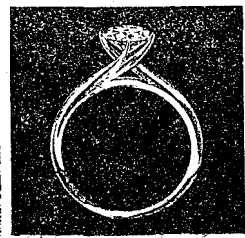
OPEN MONDAY THRU SATURDAY

Evenings, Wednesday and Thursday



Perfect symbol of your love

All your most cherished moments will be forever symbolized by your diamond engagement ring. If the name, Keepsake, is in the ring and on the tag, you are assured of fine quality and lasting satisfaction. Every Keepsake engagement diamond is flawless, of superb color and precise modern cut.



CATALINA 2250 TO 1850 WEDDING RING 125

WINANS JEWELRY

Rings enlarged to show details. Trade-Mark Reg.

Fair Premium Awards

(Continued from page 10)

Dennis Sindlinger, 3rd, \$1.
Ivies, Amelia Hess, 1st, \$1.50.
CACTUS PLANTS
Any Kind: Potted: Lisa Weber, 1st, \$1.25; Mrs. William White, Sr., 2nd, \$1; Matt Grau, 3rd, 75 cents. Three or more in container: Cheryl Koch, 1st, \$1.50.

ARTISTIC ARRANGEMENTS
Terrariums, Reann Drouare, 1st, \$2.
Dried Arrangements: Leonore Mattoff, 1st, \$2.50; Ethel Knickerbocker, 2nd, \$2; Betsy Leonard, 3rd, \$1.50.

Fresh Flower Arrangements: Martin Ruhlig, 1st, \$2.50; Jennie Walz, 2nd, \$2; Patricia Stoll, 3rd, \$1.50.

Wall Plaques: Leonore Mattoff, 1st, \$2.

CUT FLOWERS
Asters: Cheryl Koch, 1st, \$1.50; Marigolds: Delia Schiller, 1st, \$1.50; Tom Farshee, 2nd, \$1.25; Robert Gilbert, 3rd, \$1.

Zinnias: Emma Seitz, 1st, \$1.50; Nancy Ruhlig, 2nd, \$1.25; Danny Ruhlig, 3rd, \$1.
Dahlias: Katherine Seitz, 1st, \$1.50; Emma Seitz, 2nd, \$1.25; Blake Ferris, 3rd, \$1.

Miscellaneous, Mixed: Mercedes DeLaTorre, 1st, \$1.50; Cheryl Koch, 2nd, \$1.25.
Others: Emma Seitz, 1st, \$1.50; Mercedes DeLaTorre, 2nd, \$1.25; Mary Kay DeLaTorre, 3rd, \$1.

Miniature Bouquets: Beth Heller, 1st, \$1; Laurie Heller, 2nd, 75 cents; Denise Wirtz, 3rd, 50 cents.

SINGLE SPECIMEN
Roses: Blake Ferris, 1st, \$1; Tom Forshee, 2nd, 75 cents; Katherine Ellenwood, 3rd, 50 cents.

Glad: Martin Ruhlig, 1st, \$1; Danny Ruhlig, 2nd, 75 cents; William Schairer, 3rd, 50 cents.
Dahlias: Tom Forshee, 1st, \$1; Ernest Scherdt, 2nd, 75 cents; Robert Gilbert, 3rd, 50 cents.

Any other flower: Cheryl Koch, 1st, \$1; Reann Drouare, 2nd, 75 cents; Craig Mirtz, 3rd, 50 cents; Laurie Warden, 3rd, 50 cents.

Home Economics

ADULT DIVISION

CAKES
Angel Food: Martha Eiseaman, 1st, \$1.50; Therese Doll, 2nd, 75c.
Dark Cake: Marilyn Leveis, 1st, \$1; Karal Morris, 2nd, 75c; Larry Johnson, 3rd, 50c.

Light Cake: Betsy Leonard, 1st, \$1.

Fruit Cake: Barb Tralz, 1st, \$1.

Cup Cakes: Leona Kuhl, 1st, \$1.

Decorated Cakes: Dorothy Hafner, 1st, \$1.50; Barbara Wolfgang, 2nd, \$1.

PIES
Two-Crust: Ella Eschelbach, 1st, \$1.

One-crust: Martha Eiseaman, 1st, \$1.

COOKIES
Rolled: Martha Eiseaman, 1st, \$1; Loretta Doll, 2nd, 75c; Mrs. Joseph Laban, 3rd, 50c.

Dropped: Ella Eschelbach, 1st, \$1; Eileen Bristle, 2nd, 75c; Mrs. Joseph Laban, 3rd, 50c.

Filled: Mrs. Joseph Laban, 1st, \$1; Ethel Knickerbocker, 2nd, 75c.

Bar: Betsy Leonard, 1st, \$1; Barb Wolfgang, 2nd, 75c; Ethel Knickerbocker, 3rd, 50c.

Creative: Rochelle Drouare, 1st, \$1.

CANDY
Any Kind: Barb Tralz, 1st, \$1; Mrs. Joseph Laban, 2nd, 75c; Tim Johnson, 3rd, 50c.

BREAD
Yeast Bread: Marge Prinzing, 1st, \$1; Ethel Knickerbocker, 2nd, 75c; Fran Koeple, 3rd, 50c.

Quick Bread: Barbara Wolfgang, 1st, \$1; Ella Eschelbach, 2nd, 75c; Karal Morris, 3rd, 50c.

Coffee Cake: Fran Koeple, 1st, \$1; Karal Morris, 2nd, 75c; Leona Kuhl, 3rd, 50c.

Pretzels: Ethel Haist, 1st, \$1; Marge Prinzing, 2nd, 75c.

Yeast Rolls: Alice Juergens, 1st, \$1.

Sweet Rolls: Miriam Klemmer, 1st, \$1; Fran Koeple, 2nd, 75c; Loretta Doll, 3rd, 50c.

DOUGHNUTS
Raised: Marge Prinzing, 1st, \$1; Ethel Haist, 2nd, 75c.

Fried Cakes: Loretta Doll, 1st, \$1; Marge Prinzing, 2nd, 75c.

CLOTHING
ADULT DIVISION
Any Type: Cotton Dress: Darlene Robbins, 1st, \$1; Vicki Kuhl, 2nd, 75c; Kathy Stoll, 3rd, 50c.

Better Dress: Stephanie Aldrich, 1st, \$1.50; Kay Eschelbach, 2nd, \$1; Rochelle Drouare, 3rd, 75c.

Suit and Pant Suit: Kathy Stoll, 1st, \$2.

Coat: Darlene Robbins, 1st, \$2.50; Elizabeth Drouare, 2nd, \$2; Skirt and Pant Skirt: Reanne Drouare, 1st, \$1; Rochelle Drouare, 2nd, 75c.

Apron: Martha Eiseaman, 1st, \$1.

Sports Wear: Stephanie Aldrich, 1st, \$2; Carol Huffman, 2nd, \$1.50; Darlene Robbins, 3rd, \$1.

Child's garment: Carol Huffman, 1st, \$1.50; Kathy Stoll, 2nd, \$1.

Other Miscellaneous Clothing: Kay Eschelbach, 1st, \$1; Theresa Bassett, 2nd, 75c.

HOUSEHOLD FURNISHINGS
ADULT DIVISION
Embroidery: Other Pieces: Jean Milazzo, 1st, \$1.50; Joan Luick, 2nd, \$1; Stephanie Aldrich, 3rd, 75c.

Crocheting: Afghan: Marge Prinzing, 1st, \$2; Ethel Knickerbocker, 2nd, \$1.50; Ella Eschelbach, 3rd, \$1.

Garment, any kind: Dora Rodrick, 1st, \$1.50; Carol Huffman, 2nd, \$1; Delores De LaTorre, 3rd, 75c.

Other Articles: Mercedes DeLaTorre, 1st, \$1.50; Rochelle Drouare, 2nd, \$1; Janice King, 3rd, 75c.

Knitting - Garment: Joan Luick, 1st, \$1.50; Barb Tralz, 2nd, \$1; Janet McCalla, 3rd, 75c.

Other Articles: Alice Rawson, 1st, \$1; Janet McCalla, 2nd, 75c; Phyllis Passon, 3rd, 50c.

OTHER NEEDLEWORK
Tatting: Ethel Knickerbocker, 1st, \$1.

Pillows: Ethel Knickerbocker, 1st, \$1; Janice Chronister, 2nd, 75c; Yvonne Murray, 3rd, 50c.

Other Articles: Kay Eschelbach, 1st, \$1; Jean Milazzo, 2nd, 75c; Mercedes DeLaTorre, 3rd, 50c.

MISCELLANEOUS
Rugs: Jean Kern, 1st, \$1.50; Bernadette Seitz, 2nd, \$1; Amanda Eschelbach, 3rd, 75c.

Quilts: Rennie Buxton, 1st, \$1.50; Sally Gaken, 2nd, \$1; Elizabeth Drouare, 3rd, 75c.

FRUITS
Apple Sauce: Dorothy Vereway, 1st, \$1; Mrs. Joseph Laban, 2nd, 75c.

Sweet Cherries: Rochelle Drouare, 1st, \$1; Mrs. Joseph Laban, 2nd, 75c; Elizabeth Drouare, 3rd, 50c.

Sour Cherries: Mrs. Joseph Laban, 1st, \$1; Ella Eschelbach, 2nd, 75c.

Peaches: Mrs. Joseph Laban, \$1; Ella Eschelbach, 2nd, 75c.

Pears: Mrs. Joseph Laban, 1st, \$1.

Huckleberries: Barbara Wolfgang, 1st, \$1; Mrs. Joseph Laban, 2nd, 75c; Debbie Gross, 3rd, 50c.

Other Fruits: Mrs. Joseph Laban, 1st, \$1.

VEGETABLES
Green String Beans: Debbie Gross, 1st, \$1; Ella Eschelbach, 2nd, 75c; Rochelle Drouare, 3rd, 50c.

Yellow String Beans: Debbie Gross, 1st, \$1.

Beets: Mrs. Joseph Laban, 1st, \$1; Debbie Gross, 2nd, 75c.

Corn: Ella Eschelbach, 2nd, 75c.

Tomatoes: Mrs. Joseph Laban, 1st, \$1; Debbie Gross, 2nd, 75c.

Others: Debbie Gross, 1st, \$1.

JUICES
Tomato: Ella Eschelbach, 1st, \$1; Mrs. Joseph Laban, 2nd, 75c; Muriel Juergens, 3rd, 50c.

Grape: Mrs. Joseph Laban, 1st, \$1; Ella Eschelbach, 2nd, 75c.

Other Juice: Mrs. Joseph Laban, 1st, \$1.

MISCELLANEOUS
Jellies: Ethel Knickerbocker, 1st, \$1.

Jams: Fran Koeple, 2nd, 75c; Ella Eschelbach, 3rd, 50c.

Preserves: Lenore Mattoff, 1st, \$1.

PICKLES
Dill: Edith Ferris, 1st, \$1; Dorothy Vereway, 2nd, 75c; Mrs. Joseph Laban, 3rd, 50c.

Sweet: Barbara Wolfgang, 1st, \$1.

CANNING

Apple Sauce: Dorothy Vereway, 1st, \$1; Mrs. Joseph Laban, 2nd, 75c.

Sweet Cherries: Rochelle Drouare, 1st, \$1; Mrs. Joseph Laban, 2nd, 75c; Elizabeth Drouare, 3rd, 50c.

Sour Cherries: Mrs. Joseph Laban, 1st, \$1; Ella Eschelbach, 2nd, 75c.

Peaches: Mrs. Joseph Laban, \$1; Ella Eschelbach, 2nd, 75c.

Pears: Mrs. Joseph Laban, 1st, \$1.

Huckleberries: Barbara Wolfgang, 1st, \$1; Mrs. Joseph Laban, 2nd, 75c; Debbie Gross, 3rd, 50c.

Other Fruits: Mrs. Joseph Laban, 1st, \$1.

VEGETABLES
Green String Beans: Debbie Gross, 1st, \$1; Ella Eschelbach, 2nd, 75c; Rochelle Drouare, 3rd, 50c.

Yellow String Beans: Debbie Gross, 1st, \$1.

Beets: Mrs. Joseph Laban, 1st, \$1; Debbie Gross, 2nd, 75c.

Corn: Ella Eschelbach, 2nd, 75c.

Tomatoes: Mrs. Joseph Laban, 1st, \$1; Debbie Gross, 2nd, 75c.

Others: Debbie Gross, 1st, \$1.

JUICES
Tomato: Ella Eschelbach, 1st, \$1; Mrs. Joseph Laban, 2nd, 75c; Muriel Juergens, 3rd, 50c.

Grape: Mrs. Joseph Laban, 1st, \$1; Ella Eschelbach, 2nd, 75c.

Other Juice: Mrs. Joseph Laban, 1st, \$1.

MISCELLANEOUS
Jellies: Ethel Knickerbocker, 1st, \$1.

Jams: Fran Koeple, 2nd, 75c; Ella Eschelbach, 3rd, 50c.

Preserves: Lenore Mattoff, 1st, \$1.

PICKLES
Dill: Edith Ferris, 1st, \$1; Dorothy Vereway, 2nd, 75c; Mrs. Joseph Laban, 3rd, 50c.

Sweet: Barbara Wolfgang, 1st, \$1.

(Continued on page 14)



TEEN VOLUNTEERS: 16 Candy Strippers, teen volunteers at the Chelsea Community Hospital, were honored Sunday for their 500 hours of service to the hospital this summer. Shown here are (left to right) front row: Joanne Schneider, Terri Jones, Mary Linebaugh and Jennifer Tandy. Second row: Mrs. Dorothy Miller, director; Tracy Lewis, Terri Gilbreath, Cheryl Pawlowski, Joanne Rice, Nancy Gorman, Debbie Fitzsimmons, Kathy Sannes and Mrs. Robert Koch, junior director. Missing from the photo are Barb Hardy, Ann Kalmhach, Dianne Robbins, Sharon Schiller and Jeanne Thornton.

Teen Volunteers Honored at Chelsea Community Hospital

A recognition party for the first 16 teen volunteers to participate in the Chelsea Community Hospital's Candystriper program was held Sunday, Aug. 29. The 16 girls donated more than 500 hours of service to the hospital during the summer. Mrs. Lawton Steger, president of the Medical Volunteers, gave the opening address of the program, and also introduced Tom Gleason and his mother who entertained the group with mystifying feats of magic. Recognition certificates were presented to the girls by Mrs. Robert Koch, organizer of the Junior group. Dr. Michael Papo, director of the Chelsea Community Hospital, expressed the appreciation of the staff and patients for the services performed by the girls this summer. Refreshments and a social hour followed the program. Anyone interested in the Volunteer program may call Mrs. Lawton Steger, 475-4981 or Mrs. Dorothy Miller, 475-8020.

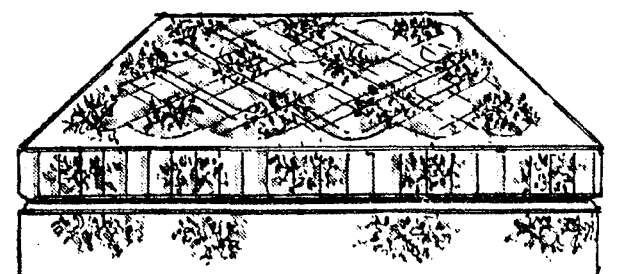
SPECIAL PURCHASE! STEARNS & FOSTER ORTHO POSTURE QUILTED MATTRESS & BOX SPRING SET \$99⁰⁰



all have these exclusive Stearns and Foster features

- Humid Guard Process®
- Weight Balanced® for correct body posture
- No sag Seat-Edge® construction
- Locked-Edge® Inner Roll
- Insulo Spring Cushion®

Save! 2 pc. 60" x 80" Queen size set—20% larger than a full size set—Both mattress and box spring.



QUEEN SIZE
\$159⁰⁰

**TWIN SIZE SPECIAL!
LORD MARLBORO SET**

Quilted Top
Stearns & Foster Quality
\$89⁰⁰

Markel HOME FURNISHINGS

YES
WE ARE MAKING
LONG-TERM FARM
REAL ESTATE
LOANS

SEE US



P. O. Box 1006
Ph. 769-2411 3645 Jackson Rd.
Ann Arbor, Mich. 48103



RESERVE CHAMPION PEN: Gordon McCalla (left) and purchaser Robert Burgett look over Gordon's reserve champion pen with a total weight of 350 pounds. Burgett purchased the two hogs for 30 cents per pound.



RESERVE CHAMPION BARROW: Karen Baldus' 185-lb. reserve champion barrow enjoys a last meal before being taken from the Chelsea Community Fairgrounds. The barrow was purchased by Michigan Livestock Exchange for 40 cents per pound.



GRAND CHAMPION PEN: The grand champion pen of hogs belonging to Karen Baldus was purchased by Washtenaw Farm & Garden at the Chelsea Fair auction. The two hogs weighed a total of 350 pounds and sold at 30 cents per pound.

Fair Premium Awards

(Continued from page 11)

Mixed: Dorothy Verway, 1st, \$1; Ruth Bristle, 2nd, 75c.
Bread and Butter: Edith Ferris, 1st, \$1; Mrs. Joseph Laban, 2nd, 75c; Elizabeth Drouare, 3rd, 50c.
Beet: Mrs. Joseph Laban, 1st, \$1; Dorothy Verway, 2nd, 75c.
Other Pickles: Edith Ferris, 1st, \$1; Leona Kuhl, 2nd, 75c; Ella Eschelbach, 3rd, 50c.
RELISHES—
Chili Sauce: Edith Ferris, 1st, \$1.
Catsup: Mrs. Joseph Laban, 3rd, 50c.
Pickles: Mrs. Joseph Laban, 1st, \$1.

JUNIOR DIVISION

CLOTHING—
Any Type: Cotton Dress; Denise Robbins, 1st, \$1; Karen Trinkle, 2nd, 75c; Diane Luick, 3rd, 50c.
Better Dress: Terri Jones, 1st, \$1.50; Denise Wirtz, 2nd, \$1.
Skirt and Pant Suit: Sue Heller, 1st, \$1.50; Mary Stoll, 2nd, \$1; Helen Leonard, 3rd, 75c.
Sports Wear: Diane Robbins, 1st, \$2; Karen Trinkle, 2nd, \$1.50; Terri Gilbreath, 3rd, \$1.
Other Miscellaneous Clothing: Rita Drouare, 1st, \$1; Diane Robbins, 2nd, 75c.

HOUSEHOLD FURNISHINGS—JUNIOR DIVISION

Embroidery—Other Pieces: Helen Leonard, 1st, \$1.50; Michelle Ball, 2nd, \$1.
Knitting—Socks, Mittens, Scarves: Gill Gilbreath, 1st, \$1; Leslie Gilbreath, 2nd, 75c; Terri Knickerbocker, 3rd, 50c.
Rugs: Helen Leonard, 1st, \$1.50; Steve Blass, 2nd, \$1; Matt McGlenn, 3rd, 75c.

Other Needlework: Nancy Heller, 1st, \$1; Sherry Moore, 2nd, 75c; Helen Leonard, 3rd, 50c.

JUNIOR DIVISION

CAKES—
Dark Cake: Helen Leonard, 1st, \$1; Diane Robbins, 2nd, 75c.
Light Cake: Diane Robbins, 1st, \$1; Helen Leonard, 2nd, 75c.
Cup Cakes: Diane Robbins, 1st, \$1.
Decorated Cake: Beth Hoover, 1st, \$1.
Other Cake: Terri Gilbreath, 1st, \$1; Diane Ruhlig, 2nd, 75c; Gill Gilbreath, 3rd, 50c.

PIES—

Any Kind: Diane Bycraft, 1st, \$1; Jerry Doll, 2nd, 75c; Beth Hoover, 3rd, 50c.
COOKIES—
Rolled: Sue Heller, 1st, \$1; Karen Kern, 2nd, 75c.
Dropped: Linda Bristle, 1st, \$1; Rita Drouare, 2nd, 75c; Alice Juergens, 3rd, 50c.
Filled: Terri Lutovsky, 1st, \$1; Bar: Becky Roberts, 1st, \$1; Linda Bristle, 2nd, 75c; Beth Heller, 3rd, 50c.

CANDY—

Any Kind: Helen Leonard, 1st, \$1.
BREAD—
Any Kind: Diane Robbins, 1st, \$1; Diane Ruhlig, 2nd, 75c; Diane Bycraft, 3rd, 50c.

Hobbies ...

Oil Painting: Senior, 21 and over—Vera Bassett, 1st, \$2; Amelia Hess, 2nd, \$1; Mercedes DeLaTorre, 3rd, 75 cents. Youth, 13-20 years—Mike Schardt, 1st, \$2; Bruce Parks, 2nd, \$1; Helen Leonard, 3rd, 75 cents. Children, 12 and under—Leigh Hafer, 1st, \$2; Neil Cockerline, 2nd, \$1; Joel Bower, 3rd, 75 cents.
Freehand sketches: Senior 21 and over—Barb Brown, 1st, \$2; Youth, 13-20: Helen Leonard, 1st, \$2; Mike Schardt, 2nd, \$1; Helen Leonard, 3rd, 75 cents. Children, 12 and under—Joel Bower, 1st, \$2; John Kopele, 2nd, \$1; Debra Kopele, 3rd, 75 cents.
Stitchery, Velvet, Other: Senior, 21 and over—Jeanne Stapish, 1st, \$2; Karol Morris, 2nd, \$1; Yvonne Murray, 3rd, 75 cents. Youth, 13-20—Reann Drouare, 1st, \$2; Sherry Moore, 2nd, \$1; Sephanie Aldrich, 3rd, 75 cents. Children, 12 and under—Leigh Hafer, 1st, \$2; Kathy Pierce, \$1; Brad Myers, 3rd, 75 cents.
Ceramics and Pottery: Senior, 21 and over—Evelyn Pammon, 1st, \$2; Ella Mae Eschelbach, 2nd, \$1; Gert Kraai, 3rd, 75 cents. Youth, 13-20—Peggy Kraai, 1st, \$2; Larry Johnson, 2nd, \$1; Peggy Kraai, 3rd, 75 cents. Children, 12 and under—Linda Holcombe, 1st, \$2; Leigh Hafer, 2nd, \$1; Tobin Boyd, 3rd, 75 cents.
Collections: Youth, 13-20—Gary Eschelbach, 1st, \$2; Floyd Schulz, 2nd, \$1; Alice Juergens,

3rd, 75 cents. Children, 12 and under—Neil Cockerline, 1st, \$2; Don Walz, 2nd, \$1; Lisa Weber, 3rd, 75 cents.

Miscellaneous: Senior, 21 and over—Lenore Matloff, 1st, \$2; Mercedes DeLaTorre, 2nd, \$1; Ethel Knickerbocker, 3rd, 75 cents. Youth 13-20—Mike Schardt, 1st, \$2; Betty Leonard, 2nd, \$1; Gayle Robbins, 3rd, 75 cents. Children, 12 and under—Michelle Ziegler, 1st, \$2; Denise Robbins, 2nd, \$1; Pam Stoffer, 3rd, 75 cents.

Wood, Leather and Metal: Youth, 13-20—Duane Luick, 1st, \$2; Douglas Eder, 2nd, \$1; Douglas Eder, 3rd, 75 cents. Children, 12 and under—Timothy Bassett, 1st, \$2; Dan Blough, 2nd, \$1; Dan Blough, 3rd, 75 cents.

Models: Senior, 21 and over—George Gooden, 1st, \$2; George Gooden, 2nd, \$1; Youth, 13 to 20—Robert Weir, 1st, \$2; Phil Magnon, 2nd, \$1; Terri Jones, 3rd, 75 cents. Children, 12 and under—Bria Nadeau, 1st, \$2; James Boyer, 2nd, \$1; Bob Swanberg, 3rd, 75 cents.

Antiques ...

HOUSEHOLD ARTICLES—

Furniture: Jim Daniels, 1st, \$2; Mary Hoskins, 2nd, \$1; Jeannie Walz, 3rd, 75c.
Textiles: Ruth Smith, 1st, \$2.
Toys: Chris Ford, 1st, \$2; Mildred Carty, 2nd, \$1; Beth Hoover, 3rd, 75c.

OTHER ARTICLES—

Metals: Amalia Bohne, 1st, \$2; Lewis Hatt, 2nd, \$1; Anton Nielsen, 3rd, 75c.
Firearms: Duane Luick, 1st, \$2; Chris Ford, 2nd, \$1; Richard Robbins, 3rd, 75c.
Prints: Jennie Walz, 1st, \$2; Brenda McGuire, 2nd, \$1.
Folk Art: Scott Powers, 1st, \$2.
Wooden Ware: Scott Bowers, 1st, \$2; Gloria Greenleaf, 2nd, \$1; Margaret Bassett, 3rd, 75c.
Miscellaneous: Mrs. Richard Keezer, 1st, \$2; Ella Aldrich, 2nd, \$1; Vera Bassett, 3rd, 75c.

Kenneth Luick

Earns Degree at EMU

Kenneth Luick, son of Mrs. May Luick and the late Gerald Luick, formerly of Chelsea, graduated Aug. 12 from Eastern Michigan University in Ypsilanti. He received a Bachelor of Business Administration degree.

Baby Rattler Found in Sylvester Fisher Home

Mrs. Sylvester Fisher, 8250 Messter Rd., found a baby rattlesnake wandering from her dining room to her kitchen Monday, Aug. 30.

Mrs. Fisher isn't sure whether she inadvertently brought the nine-inch infant in with her canning vegetables or whether it crawled through an open door.

Mr. Fisher has killed two adult rattlers this summer, one about six weeks and the other 10 days ago, and Mrs. Fisher thinks this may be one of their off-spring.

Although intrigued by the snake, which was given to a glib newspaper reporter from Dexter, Mrs. Fisher hopes she doesn't find any others.

Two Arrests Follow Routine Stop By Police

Chelsea police began by stopping a car for defective equipment, and ended by making two arrests Sunday, Aug. 29.

Patrolmen Lenard McDougall and Bruce Sibert, running a routine check on Karl A. Musdolf, 30, 8186 Waite Rd., Jackson, whom

they had stopped for driving a car with defective equipment, discovered that he was wanted on a traffic warrant by State Police of the Jackson Post.

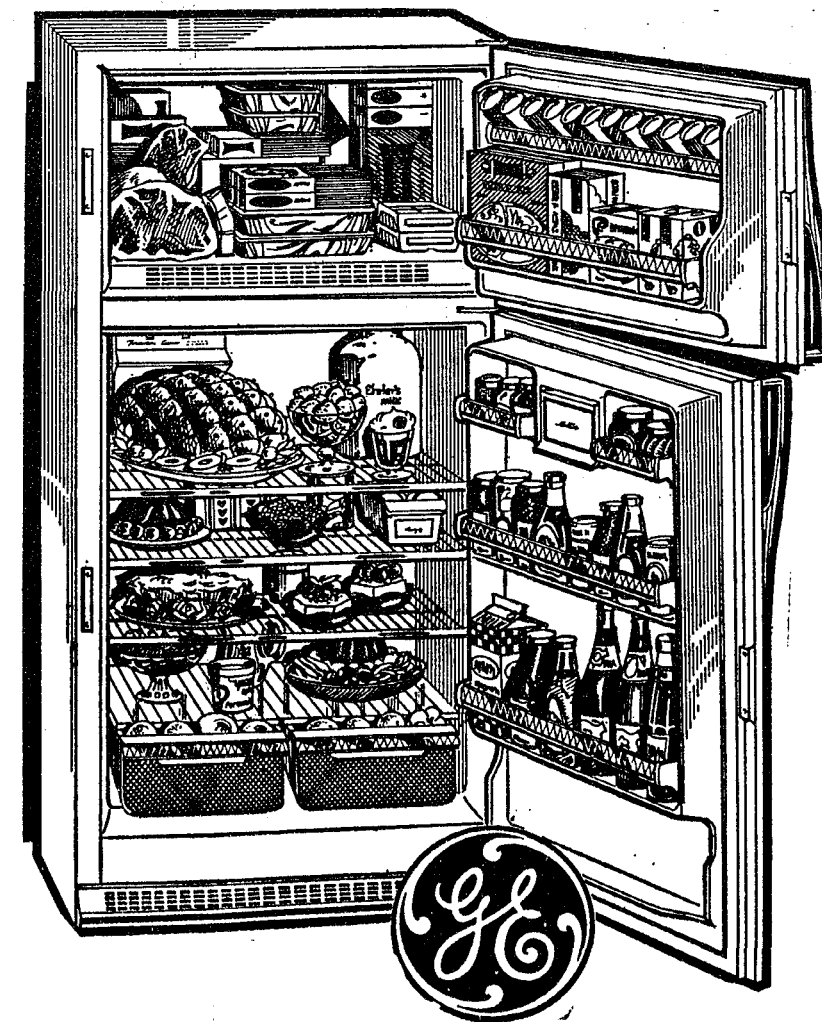
After arresting Musdolf, police also ran a routine check on the passenger in the car, Lawrence E. Guinan, Jr., 35, 1571 Sugar Loaf Lake, Chelsea, before allowing him to drive the car away. Police discovered that Guinan was wanted on a civil warrant for non-support, and arrested him. Musdolf was released on \$25 bond. Guinan is being held in Washtenaw County Jail in lieu of \$4,100 bond.



TOP VALUES IN REFRIGERATORS—WASHERS—
—DRYERS—RANGES—DISHWASHERS—TV—
STEREO—AIR CONDITIONERS! Compare!

GENERAL ELECTRIC

BEST BUYS



TBF-15SM

Big freezer section ...
no defrosting ever!

14.7 cu.ft. No Frost Refrigerator

- Freezer holds up to 148 lbs.
- Two Ice 'n Easy trays.
- Freezer door shelves for half gallon ice cream cartons, 11 juice cans.
- Four cabinet shelves, one slides out.
- Twin vegetable bins hold 2/3 bushel.
- Removable bin holds up to 18 eggs.
- Coil-free back for neat, flush fit.
- Separate temperature controls.
- Only 30 1/2" wide, 64" high.
- GE colors or white.

ONLY
\$299⁹⁵ w/t

HEYDLAUFF'S

112 N. Main St., Chelsea

(Formerly Frigid Products)

Phone GR 9-6651



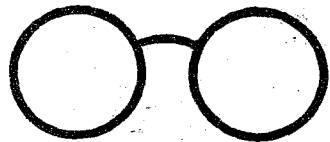
Chelsea School Regulation
GYM CLOTHING
Junior High - Senior High
LETTERED GYM TRUNKS
LETTERED GYM SHIRTS
SWEAT SOCKS - GYM SHOES
STRIETER'S MEN'S WEAR
"The Place To Go for Brands You Know"

BUDGET-WISE STORE

116 S. MAIN

CHELSEA, MICHIGAN

Ph: 475-7501



SMART SAVINGS SALE

Sale Starts Now Ends in 10 Days

PAPERMATE NINETY-EIGHT

- SHOCKPROOF
- WATERPROOF
- WEARPROOF
- LEAKPROOF
- SKIP-PROOF
- FLUNKPROOF

Reg. 98¢

49¢ Each

ADDITIONAL PENS 69¢ EACH DURING SALE

LIMIT TWO With Coupon Inside

FAMOUS DR. WEST'S TOOTHBRUSH

- Medium Bristle
- Hard Bristle
- Permanent Plastic Carrying Case.

ADDITIONAL 39¢ EACH DURING SALE

Reg. 69¢

19¢ Each

LIMIT TWO With Coupon Inside

ALL SHEER ONE SIZE PANTY HOSE

Sheer from waist to toe. Ideal for Hot Pants, Short Skirts, or any outfit. Nude Sandalfoot for today's open shoe styles.

Reg. \$1.99

69¢ Pair

- CINNAMON
- BEIGE
- COFFEE
- OFF-WHITE

New! HAIR TRIMMER COMB

Save Barber and Beauty Shop costs! Trim, Shape, Thin and Style Hair.

ADDITIONAL COMBS 69¢ DURING SALE

Reg. \$2.98 Value

49¢ Each

LIMIT TWO With Coupon Inside

Small Ring — Fashion BELGIUM DESIGN BINDER

Heavyweight Durable Board Assorted Colors, 8½" x 11", Durable Booster, 1/2" Rings

No Limit — Buy One for Each Subject!

Reg. \$1.39

49¢ Each

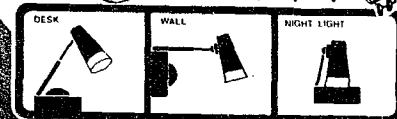
Hallmark HI/LO WALL & DESK HI-INTENSITY LAMP

Ideal for home, office, school and workroom. Full telescoping arm. Swivels 360°. Thumb controlled Hi-Lo switch controls light from brilliant pure white light to soft glow.

Reg. \$6.95

\$3.59 Each

UL Approved



FINE LINE FIBRE TIP PEN

- Made in U.S.A.
- Extra Long
- Assorted Colors

Reg. 39¢ Value

9¢ Each

No Limit!

DYMO 3/8" HOME LABELMAKER

FULL SIZE — HEAVY DUTY EASY TO USE

ORGANIZES — IDENTIFIES — PERSONALIZES — PROTECTS

DYMO TAPES REG. \$1.25 **99¢** EACH

Reg. \$2.99

99¢ Each

LADIES' STRETCH NYLON BRIEFS

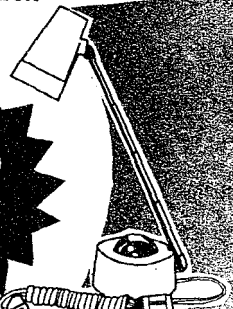
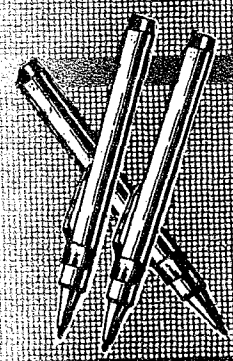
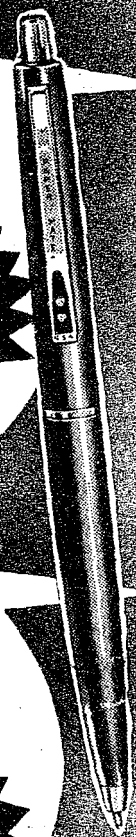
One Size Fits All. Bikini Panties. Perfect fit. Choice of colors. No ironing. Wash easily. Dry quickly.

Reg. 59¢ Pair

29¢ Pair

ADDITIONAL PAIRS 39¢ DURING SALE

LIMIT TWO PAIR With Coupon Inside



<p>69¢ Famous Dr. West's TOOTHBRUSH</p> <p>Limit Two 19¢ EACH See Front Page</p> <p>- WITH THIS COUPON -</p>	<p>\$2.98 New Hair TRIMMER COMB</p> <p>Limit Two 49¢ EACH See Front Page</p> <p>- WITH THIS COUPON -</p>	<p>98¢ PAPER MATE PEN</p> <p>Limit Two 49¢ EACH See Front Page</p> <p>- WITH THIS COUPON -</p>	<p>59¢ STRETCH NYLON BRIEFS</p> <p>Limit Two Pair 29¢ PAIR See Front Page</p> <p>- WITH THIS COUPON -</p>
--	--	--	---

BACK-TO-SCHOOL SALE

SAVE \$3.99

WESTCLOX
DROWSE ELECTRIC
ALARM CLOCK

Easy to read numerals & sweep second hand. Has 5 and 10 minute alarm interlude buttons for that extra "Forty Winks!"

Reg. \$6.98
\$2.99 Each



St. Mary's

HEATHERTONE WINTER WEIGHT BLANKETS

72" x 90" - Fits full or twin size bed. Super Loft - Super Weight. A magic blend of 50% Acrylic, 25% Polyester and 25% Rayon, with a matching all-nylon binding.

Reg. \$6.99
\$3.99 Each

SUPER VALUE PRICED AT . . .

• PINK
• GOLD
• BLUE
• GREEN



GYM BAGS

LARGE 16" SIZE

Reg. \$2.99
\$1.99 Each

Choice of All Vinyl or Fabric/Vinyl Combination

Tempered Steel Frame



HEALTH & BEAUTY AIDS

CLOSE-UP TOOTHPASTE

• REGULAR • MINT

Large 4.6 oz. Super Whitening Toothpaste AND Mouthwash in One!

WHITEST TEETH! FRESHEST BREATH!

Regular 89¢ Value
59¢ Tube



RIGHT GUARD ANTI-PERSPIRANT

Super Dry Deodorant

net wt. 5-oz.

SAVE 50%
Reg. \$1.19 Value
59¢ Can

2 For \$1.18



CASSETTE CADDY

Holds 12 to 18 Cassettes. Convenient Tote and Storage Unit.

Reg. \$1.50
97¢ Each

CASSETTE RECORDER

With recessed handle, molded storage holder for Remote Microphone. Batteries, A.C. Jack.



Head and Shoulders SHAMPOO

Reg. \$2.45
\$1.44 Tube

net wt. 7-oz. Tube

New! - SUPER SIZE

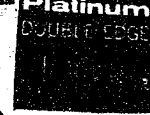


GILLETTE PLATINUM BLADES

Double Edge 5's

Reg. \$1.00
49¢ Pkg.

No Limit!



For the Entire Family CHROME PLATED SLACK RACK

Holds 5 Pair of Slacks In Place of One

Reg. \$9.99
9 Your



MODESS 12's

• Regular • Super New Double Deodorant

ADDITIONAL BOXES 45¢ DURING SALE

Reg. \$2.45
39¢ Box


LIMIT TWO With Coupon Above



F.D.S. FEMININE HYGIENE Deodorant Spray

Compare \$1.50 Value
88¢ Can

PLUS - 2 FDS Tissues with Each Aerosol Can



100% NYLON GIRLS' OPAQUE PANTY TIGHTS

Panty & Hose All in One Full Range of Sizes 4-6X, 7-10 and 12-14

Reg. \$1.99
99¢ Pair

NAVY - RED WHITE - GREEN

GENUINE LEATHER STICK BARETTES

New Fashion Assortment Just Arrived - Choose from many New Styles. No Limit - While They Last!

Reg. \$1.00
49¢ Each



BIKINI BABUSHKA

CHOICE OF:
• Water Repellent
• Reversible
FLORAL or SOLID

Reg. \$1.00
49¢ Ea.



FULL FEATURED - SCULPTURE WIG FORM

Store It, Shape It, Style It



FULL LENGTH FASHION COLORS YARN HAIR TIES


Reg. \$1.00
49¢ Pkg.



WALDORF BALSAM Hair Conditioner with PROTEIN

Reg. \$1.75 Value
88¢ Pint

net wt. 16-oz.



SUCTION CUP WIG STAND

For Foam Wig Form

Reg. \$1.00
66¢ Each

DISC WIG

Wide Base Tipping

Reg. \$1.00
60¢



SOME ITEMS NOT EXACTLY AS PICTURED

WE RESERVE THE RIGHT TO

NEW Double Deodorant
MODESS 12's
39¢ BOX
See Below
- WITH THIS COUPON -

\$1.98 60-Minute CASSETTE TAPES
Limit Three **49¢** EACH
See Below
- WITH THIS COUPON -

98¢ UNBREAKABLE FAMILY PACK COMBS
Limit Two Pkgs. **39¢** PKG.
OF 12 See Below
- WITH THIS COUPON -

29¢ RUBBER Tipped BOBBY PINS
Limit Two Cards **9¢** CARD
OF 60 See Back Page
- WITH THIS COUPON -

SAVE TIME!
SAVE MONEY!
DORMEYER PROFESSIONAL STYLE
12-PIECE HOME

BARBER KIT

Complete with Scissors, Heavy duty Electric Clippers, three Attachments, two Combs, Lubricating Oil, Cleaning Brush, Blade Guard, Storage Tray and Illustrated Instructions.

Reg. \$9.95
\$6.66 Each

TOP QUALITY 3-TIER BOOK CASE

Quality Smooth Walnut Finish
Durable - Easy to Assemble.

Reg. \$15.99
\$9.99 Each

PROFESSIONAL MODEL HAIR STYLING

DRYER

Blows Hot and Cold Air. Small, easy to handle, yet dries like a larger dryer. U.L. approved. With Professional Styling Instruction Booklet for Men's and Ladies' Hair Styles.

Reg. \$14.95
\$9.97 Each

BACK TO SCHOOL WE GO

SAVE \$10.00

LID STATE

Reg. \$29.95

19.95 Each

60-MINUTE CASSETTE TAPE

Reg. \$1.98

ADDITIONAL 69¢ EACH DURING SALE

49¢ Each

LIMIT THREE With Coupon Above



TIMEX MINNIE MOUSE

Reg. \$12.95

WATCH \$9.88 Each

The nation's Newest Fashion Sensation! This Adult Watch has large face and wide mod strap. A real conversation piece - Yes, Minnie has been liberated!

TIMEX WATCHES

SAVE 25%

Reg. \$9.95

• MEN'S CALENDAR WATCH
Sweep Second Hand - Luminous Dial
• LADIES' CAVATINA WATCH

\$7.44 Each

12 UNBREAKABLE DRIP-DRY HANGERS

Metal Center - Vinyl Coated - Super Strong - Light Weight - Prevents Rust. Perfect for Wash 'n' Wear Fabrics. Ideal for Travel.

POCKET SIZE MAGIC BRAIN CALCULATOR
ADDS - SUBTRACTS MULTIPLIES

Reg. \$1.00

39¢ Each

Convenient size for student, housewife, salesman, office worker. Ideal for adding supermarket purchases.

HANDY DESK FILE ORGANIZER

Reg. \$1.98 Value

For office, home and school. Available in beige, ivory, sage green & black. Here's your chance to "Get it All Together" and Save too!

96¢ Each

FAMILY PACK - 12 UNBREAKABLE COMBS

ADDITIONAL 49¢ PKG. DURING SALE

Reg. 98¢

39¢ Pkg.

POCKET - DRESSER - RAT TAIL BOBBY - BARBER
Purchased individually 39¢ each
NOW - Buy 12 Combs for only 39¢.

LIMIT TWO PKGS. With Coupon Above

FASHION PORTFOLIO

Assorted Floral and Plaid Designs. 2 Pockets inside each.

17¢ Each

Buy Now & Save! 6 For 99¢

RUBBER BANDS

Reg. 29¢

19¢ Pkg.

ASSORTED SIZES AND COLORS

FORMED FOAM

Reg. \$1.29

FORM
on this Form!

49¢ Each

12" x 16" x 3" VINYL BOOK BAG

Reg. 79¢

39¢ Each

Holds and protects books from rain, snow and dirt - easier to carry! Fold flat and store in ring binder. Ideal for sweater storage.

DRIP DRY HANG UP

A Real Space Saver!

PORTABLE - COLLAPSIBLE

Hang wet clothes, indoors or out... in showers, bathrooms, on clotheslines.

Reg. \$2.00

79¢ Each

STAND

6¢ Each

WIRE WIG BRUSH

Finished Hardwood Block

Reg. \$1.00

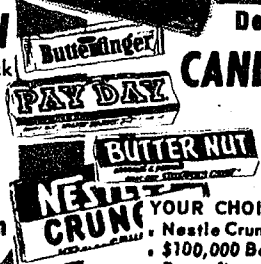
66¢ Each

Convenient Purse Size for Home or Travel. Designed for Best Care of your Wig.

Delicious Fresh CANDY BARS

Reg. 15¢ Each

10 FOR 97¢



YOUR CHOICE OF:
• Nestle Crunch • Payday
• \$100,000 Bar • Baby Ruth
• Butterfinger • Buttermut

10¢ EACH

30-GALLON SIZE PLASTIC TRASH BAGS

Reg. 98¢

39¢ Pkg.

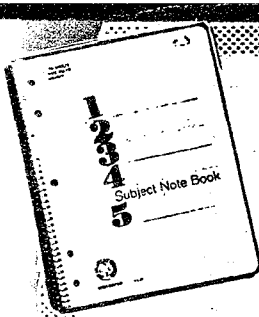
Eight count per package with Ties

• HEAVY DUTY • LEAK-PROOF



QUANTITIES

WHILE THEY LAST



150
SHEET
WIRE
BOUND

THEME BOOK

5-Subject Book with Dividers,
Color Coded Plasticized Covers.
5-Hole, 10½" x 8"

Reg.
\$1.29

69¢
Ea.



HOME LIBRARY PORTABLE WOODEN BOOK RACK

Heavy Duty Construction for
Bedroom, Den, Office, Student's
Room. Holds up to 20 Pocket
Novels or 8 Full Size Books.
Easy to Assemble.

Reg.
\$2.00

99¢
Ea.

JUMBO
HOUSEHOLD

BULLETIN - BLACKBOARD

Half Corkboard, Half Blackboard -
with Grooved Tray for pencils,
pens and chalk. Great for kitchen,
den, utility room and bedroom. Ideal
for the busy Student or Homemaker.

Reg.
\$2.00

\$1.29
Each

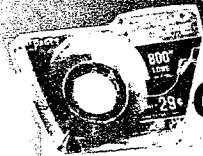
300
COUNT
5-HOLE

NOTEBOOK PAPER

Reg. 79¢

44¢
Pkg.

LIMIT ONE PKG.



800' LePage's CELLOPHANE TAPE

1/2" Wide - On Dispenser.
Buy SEVERAL and SAVE!

Reg. 29¢

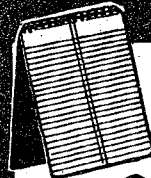
19¢
Roll



8½" x 11" TYPING PAD

Reg. 49¢

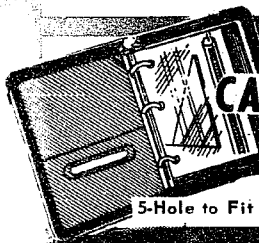
33¢
Each



COIL BOUND STENOGRAPHER NOTEBOOK

Reg. 49¢

33¢



TRANSPARENT PLASTIC CARRY-ALL POUCH

with ZIPPER
5-Hole to Fit Any Type Binder

Reg. 29¢

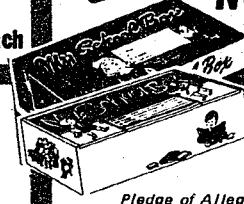
17¢
Each



3" x 5" RULED INDEX CARDS

Reg. 29¢

19¢
Pkg.

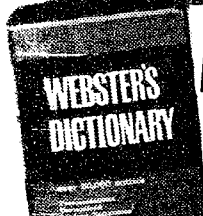


SCHOOL BOXES

Reg. 39¢
Value

22¢

Pledge of Allegiance printed inside
of each box cover. Colorfully printed
box provides storage for crayons,
paste, pencils, scissors. For the
Pre-Schooler and Young Scholar.

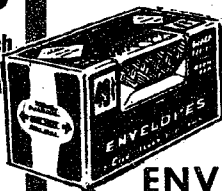


WEBSTER'S DICTIONARY

DESK SIZE
Over 50,000
Entries

Reg. \$1.29

59¢
Each



STUART HALL - MINT FLAVORED SEAL ENVELOPES

Reg. 49¢

29¢
Pkg.

2 For 58¢



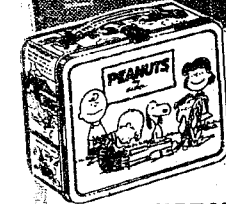
CHECK SIZE -

METAL FILE BOX

Reg. \$2.69

\$1.99
Each

Complete with
Indexes and Key



THERMOS® SCHOOL LUNCH BOX

ALL METAL
POPULAR TV and CARTOON
Characters: Peanuts,
Campus Queen, Hot
Wheels, Road Runner,
Hee Haw, The
Partridge Family,
Harlem Globetrotters,
Lance Link, Play Ball, Plaid.

\$1.18
Each



INSULATED SNAK JAR

Now with the Peanuts Gang

Reg. \$1.29

69¢
Each

2 For \$1.35

- CHARLIE BROWN
 - SNOOPY
 - LUCY
- And your Choice
of 3
Solid Colors



4-CUP ALUMINUM HOT POT

Reg. \$2.99

\$1.97
Each

Heats water
instantly for tea,
coffee, warm soup,
and chili. Ideal
for office,
student quarters,
work, home,
and travel.



VARIETY PACK For LUNCHES

Reg. 69¢

- 3 PACKS
Potato Chips
- 3 PACKS
Chees Pops
- 3 PACKS
Caramel Corn
- 3 PACKS
Corn Chips

55¢
Pack
of 12



BOBBI PINS

60-COUNT
Rubber Tipped
Reg. 29¢

9¢
Card

ADDITIONAL
19¢ CARD

LIMIT TWO
With Coupon Inside



KEY CHAIN AND BEADED COIN PURSE

Reg. \$1.00

59¢
Ea.

2 For \$1.00

A Smart
Combo
Choice of
Colors



CLOSE THE COMMUNICATION GAP WITH HOT PANTS STATIONERY

Reg.
\$1.25

88¢
Box

LORD ESQUIRE BOOT POLISH

New Hi-Gloss
"Clean" Formula

Reg. 59¢

Shines your Shoes,
Won't Stain your
Hands!

- Black • Brown
- Neutral

net wt. 2-oz.

39¢
Each

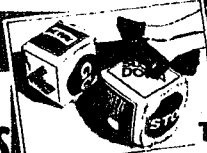
No Limit!



POPULAR ROUND ZODIAC BANKS

Reg. \$1.49 Value

69¢
Each



STOP TRAFFIC HASOCK

Inflates to 11-inch
cube, 6 different
Traffic Signs
on each.

Reg. \$1.00

49¢
Each

MOD MOBIL INFLATABLE

Bedroom
Den - Dorm
Playroom

STURDY WOOD UTILITY STOOL

WALNUT FINISH
Stretch Your Height

Reg. \$2.98

\$1.98
Each

While You Stretch
Your Dollar